

Print Number:

Print Date:

---

**NOBLELIFT**



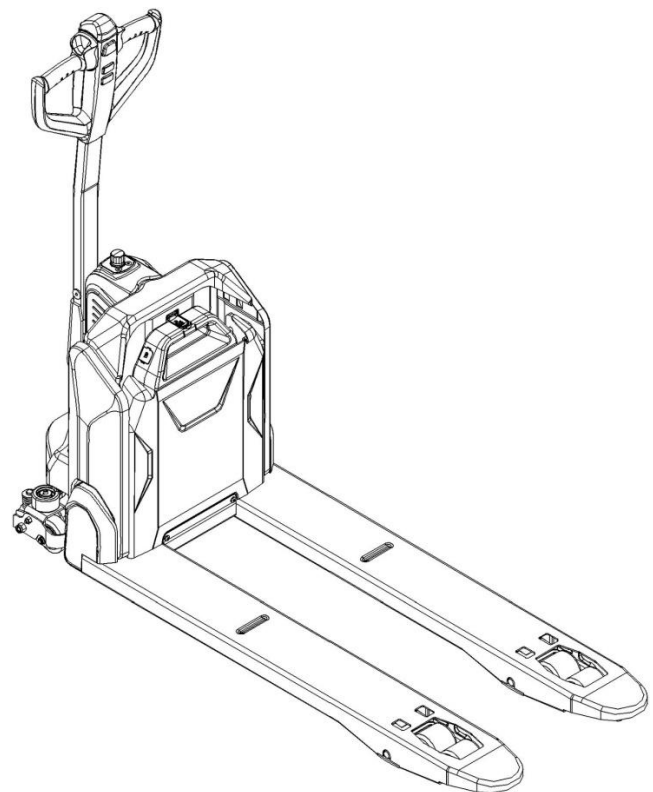
Scan QR Code for More

Service Hotline: 836115

**Electric Pallet Truck PTE15N**

**PARTS MANUAL**

508046020101



Version: **V02**

Truck Identification Number From:

## Parts Manual

## PTE15N-PM02EN

Please order spare parts from authorized dealers of Noblelift Intelligent Equipment Co., LTD.

In order to avoid wrong delivery, all the orders for spare parts should specify the following items:

- Truck model, identification number and manufacture year.
- Orders for spare parts of mast, hydraulic transmission unit, steering axle, motor, etc. shall indicate the manufacture number of these parts.
- Codes for Noblelift spare parts are shown in the table of parts manual. Please also pay attention to the description of supply status, order quantity, etc. (check the number listed in "Mark" column of the parts manual).

"Mark" Column:

The unmarked indicates the parts are in short supply cycle.

Number 1: supply as package. Indicating these that parts are small parts and seal parts, which are supplied in package unit and in short supply cycle.

Number 2: supply with constraints. Indicating that these spare parts are not in stock and will be prepared for production after receiving the order from customers, which are in long supply cycle.

Number 3: phasing-out supply. Indicating that these parts will be replaced by new parts due to technical improvements and the current stock will not be available when these parts run out. Please check the description of technical improvements notice.

Number 4: supply as assembly. Indicating that these parts are assembly parts defined by manufacture process, which cannot be supplied as a single part.

Number 5: check other tables.

This parts manual is the property of Noblelift and can be shared under the confidential agreement only, Noblelift has the right to claim for compensation of any unauthorized use. Copy without permission is not allowed. Figures in the manual are not limited by the original design. Noblelift Intelligent Equipment Co., LTD reserves the right to improve the products for continuous technology progress.

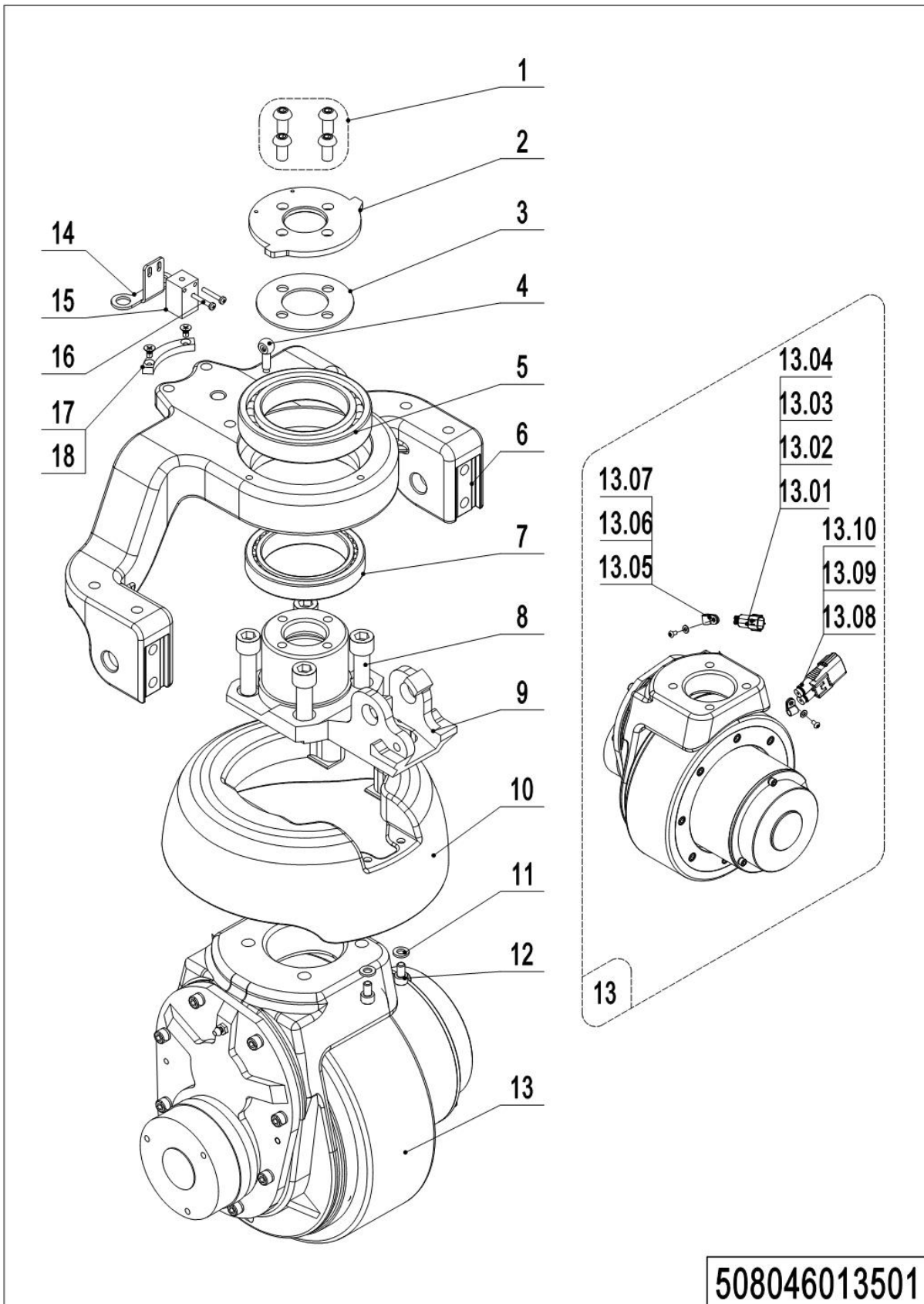
## Table of Contents

Chapter 1: Drive System.....	5
01 Drive Unit Steering (508046013501) .....	5
01 Drive Unit Steering(508046013501) Continuation.....	7
02 Drive Assembly(508046013001).....	9
03 Drive Assembly (508046013002) .....	11
Chapter 2: Hydraulic System.....	13
01 Hydraulic Components(508046023501).....	13
Chapter 3: Truck Frame .....	15
01 Truck Frame (508046038501) .....	15
01 Truck Frame (508046038501) Continuation.....	17
02 Truck Frame (508046038502) .....	19
02 Truck Frame (508046038502) Continuation.....	21
Chapter 4: Steering System, Braking System, Wheels .....	23
01 Tiller Unit(508046011001) .....	23
02 Tiller(508046011002) .....	25
03 Load Wheel (Tandem) (508046017001) .....	27
04 Caster (508046016501) .....	29
05 Caster(without) (508046016502) .....	31
Chapter 5: Electrical Parts .....	33
01 Wire Harness (508046033001) .....	33
02 Controller (508046033002) .....	35
03 Charger (508046036501).....	37
03 Charger (508046036501) Continuation .....	39
03 Charger (508046036501) Continuation .....	41
04 Traction Battery (508046037001).....	43
Chapter 6: Special Parts.....	45
01 Load Backrest (508046040501) .....	45
Chapter 7: Others .....	47
01 Labels and Decals-EU(508046047001).....	47
02 Labels and Decals-US (508046047002) .....	49
Appendix.....	51
01 Electrical Circuit Diagram(508046045501).....	51
02 Hydraulic Circuit Diagram(508046045502).....	52
03 Consumable Parts List .....	53



## Chapter 1: Drive System

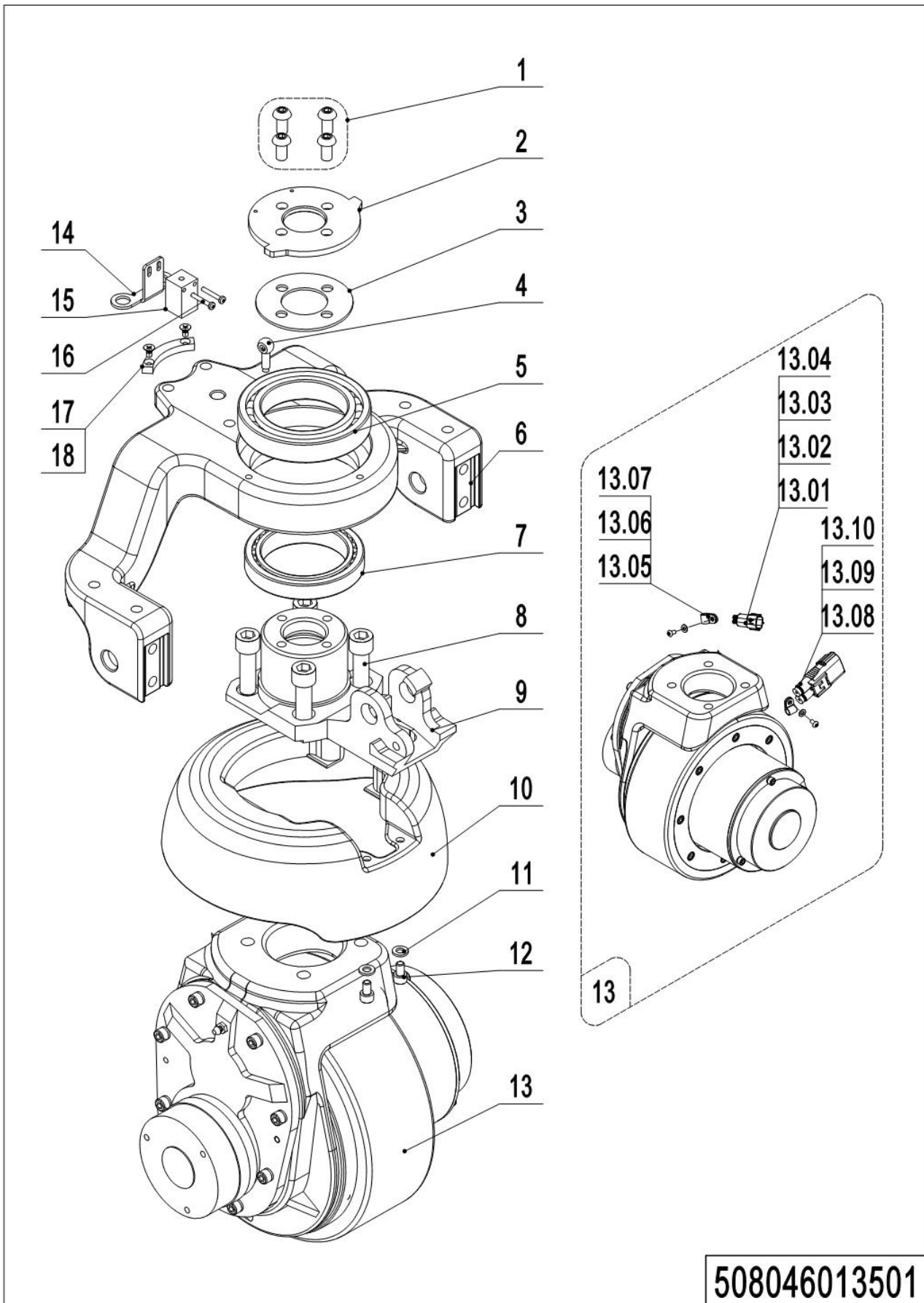
### 01 Drive Unit Steering (508046013501)



## 01 Drive Unit Steering (508046013501)

No.	Item Code	Mark	Item Description	Qty.	Substitute	Note
1	910200300024	1	Screw	4		
2	508013520003		Bearing Plate	1		
3	508013520004		Subplate	1		
4	910700200058	1	Bearing	1		
5	508013520000		Wheel Mount	1		
6	910700600044		Bearing	1		
7	910200200076	1	Screw	4		
8	508013520001		Flange	1		
9	508013520101		Cover	1		Be sure to color your order
10	910400100005	1	Flat Washer	2		
11	910200200033	1	Screw	2		
12	508098510014		Drive Unit	1		6NMPU
12	508098510078		Drive Unit	1		6NMPU (Water proof)
12	508098510052		Drive Unit	1		6NMPU Non-slip
12	508098510079		Drive Unit	1		6NMPU Non-slip (Water proof)
12	508098510080		Drive Unit	1		8NMPU
12	508098510057		Drive Unit	1		8NMPU (Water proof)
12	508098510081		Drive Unit	1		8NMPU Non-slip
12	508098510082		Drive Unit	1		8NMPU Non-slip (Water
12	508098510094		Drive Unit	1		8NMPU (YX)
12.01	920400200004	1	Connector	1		
12.02	920400200003	1	Connector	1		
12.03	920400200017	1	Connector	2		
12.04	920400200018	1	Connector	2		
12.05	910200700001	1	Screw	2		
12.06	910400100003	1	Flat Washer	2		
12.07	921300200001		Cable Clamp	2		
12.08	920400200152	1	Connector	1		
12.08	920400200169	1	Connector	1		Water proof
12.09	920400200172	1	Connector	2		

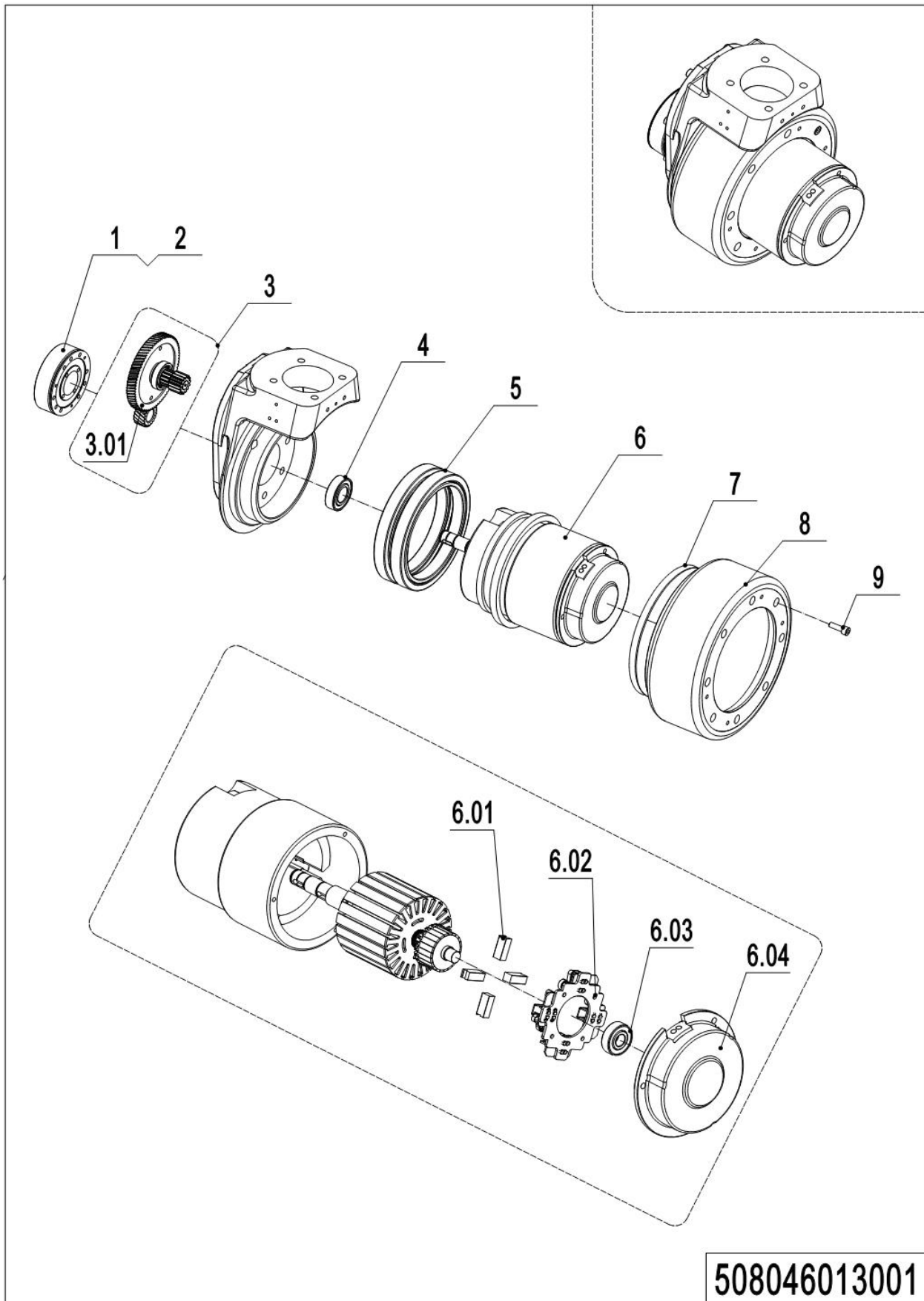
## 01 Drive Unit Steering(508046013501) Continuation



## 01 Drive Unit Steering (508046013501) Continuation

No.	Item Code	Mark	Item Description	Qty.	Substitute	Note
12.09	920400200150	1	Connector	2		Water proof
12.10	920400200171	1	Connector	2		
13	508033020003		Bracket	1		
14	920200400017		Proximity Switch	1		
15	910200500015	1	Screw	2		
16	508033020002		Induction Block	1		
17	910200700001	1	Screw	2		



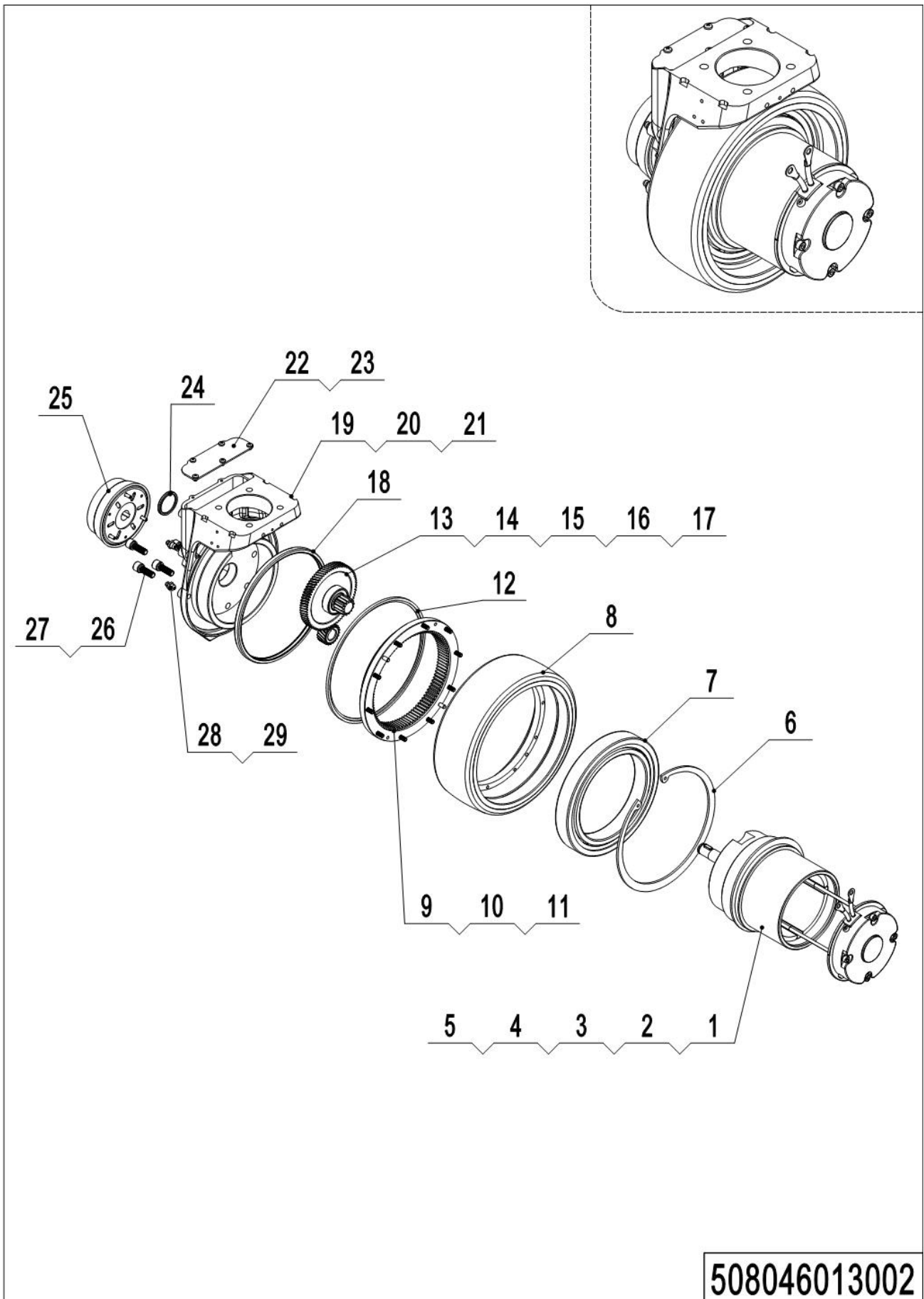
**02 Drive Assembly(508046013001)**

1= Supply as package. 2= Supply with constraints. 3= Phasing-out supply. 4= Supply as assembly. 5= Check other tables.

## 02 Drive Assembly (508046013001)

No.	Item Code	Mark	Item Description	Qty.	Substitute	Note
1	508098520002	2	Brake	1		
2	508098520040		Rubber Strip	1		
3	508098510015	2	Gear Components	1		
3.01	508098520004		Gear	1		
4	910700200004		Bearing	1		
5	508098520011	2	Gear Ring	1		
6	508098510016	2	Motor	1		
6.01	508098520000	2	Carbon Brush	4		
6.02	508098520001	2	Carbon Brush Holder	1		
6.03	910700200016		Bearing	1		
6.04	508098520036	2	End Cap	1		
7	508098520032		Seal	1		
8	508098520003		Wheel	1		
8	508098520026		Wheel	1		Non-slip
9	910200200167		Screw Kits	8		

### 03 Drive Assembly (508046013002)



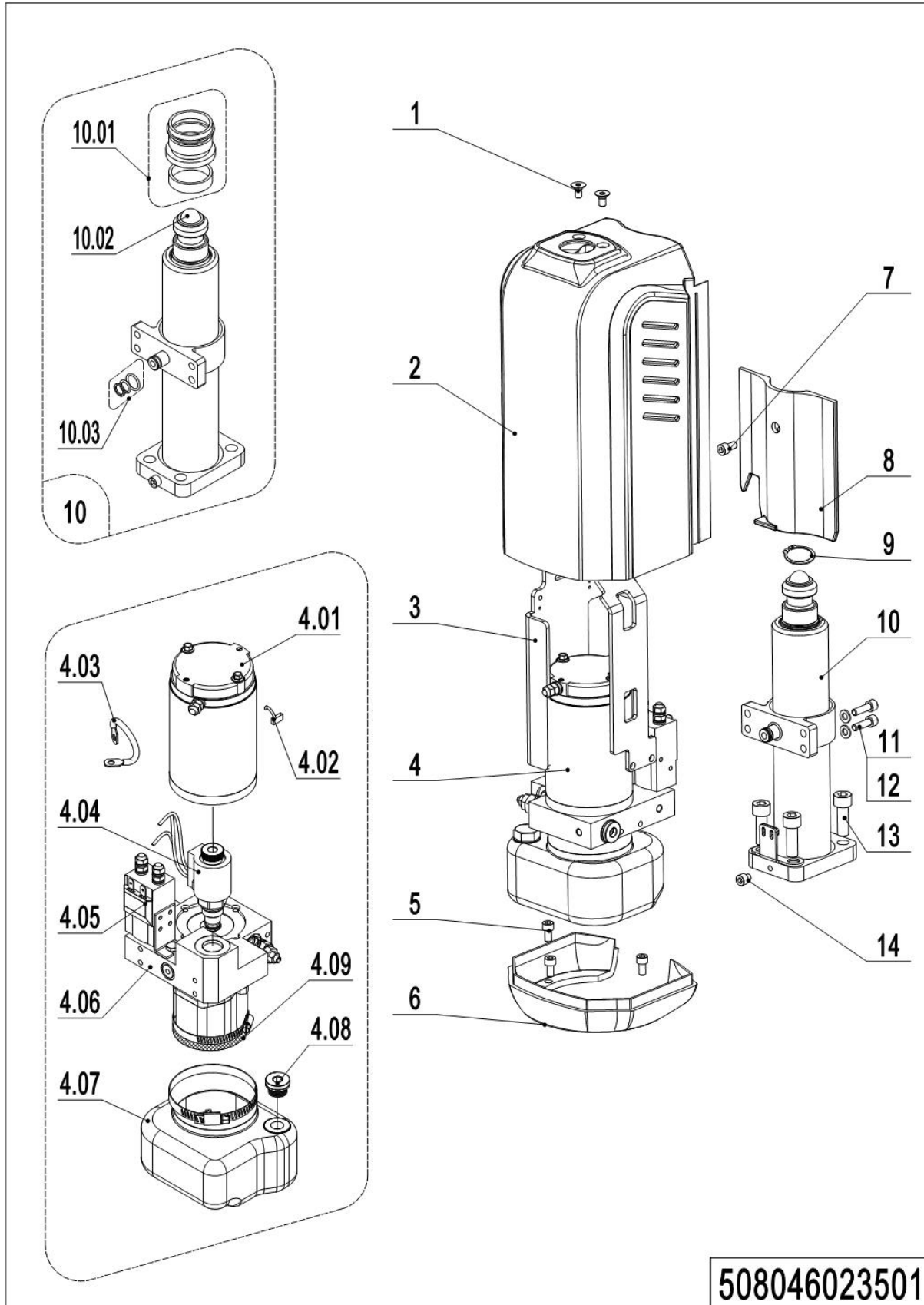
508046013002

## 03 Drive Assembly (508046013002)

No.	Item Code	Mark	Item Description	Qty.	Substitute	Note
1	961000700010	2	Motor	1		
2	910401300030		Circlip	1		
3	910600800005		Flat Key	2		
4	910401300006		Circlip	1		
5	910401300007		Circlip	1		
6	910401400015		Circlip	1		
7	910700200053		Bearing	1		
8	961000700008	2	Tyre	1		
9	961000700007		Gear	1		
10	941100400015	1	Screw, M5x14	10		
11	910600100010		Cylindrical Pin	2		
12	961000700009		Wiper Seal	1		
13	961000700003		Gear	1		
14	961000700004		Gear Shaft	1		
15	910600800006		Flat Key	1		
16	910700200057		Bearing	2		
17	961000700006		Gear	1		
18	961000700013		Oil Seal	1		
19	961000700001		Gearbox	1		
20	910401400014		Circlip	1		
21	961000700012		Oil Seal	1		
22	910200500020	1	Screw	5		
23	961000700002		Cover	1		
24	961000700005		Cover	1		
25	961000700011		Brake	1		
26	910200200147	1	Screw	5		
27	910400500019	1	Spring Washer	5		
28	911200100003		Oil Cup	2		
29	910800900010		Bonded Washer	2		

## Chapter 2: Hydraulic System

### 01 Hydraulic Components(508046023501)

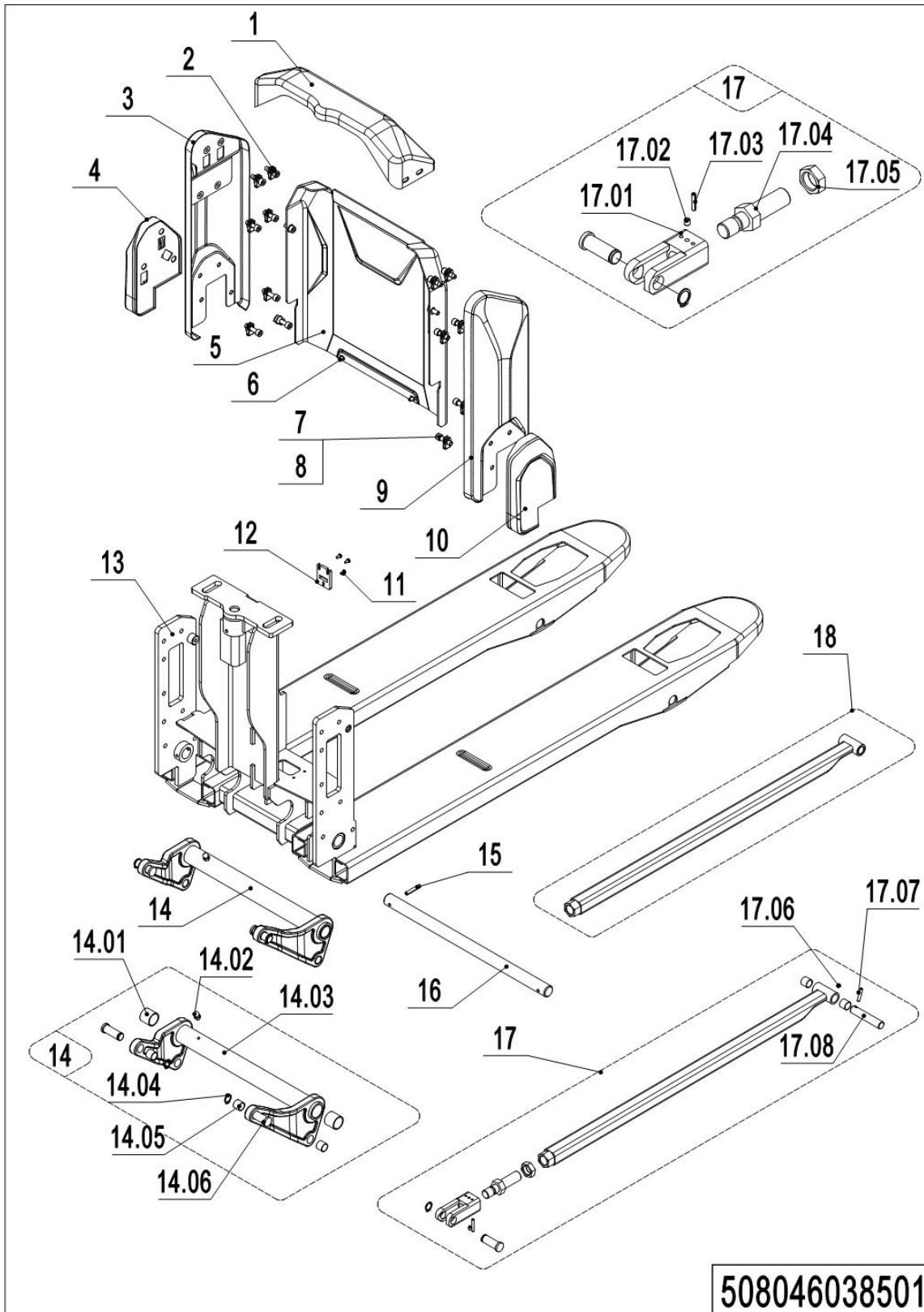


## 01 Hydraulic Components (508046023501)

No.	Item Code	Mark	Item Description	Qty.	Substitute	Note
1	910200400015	1	Screw	2		
2	508024020101		Cover	1		Be sure to color your order
3	508024010002		Mounting Rack	1		
4	950900100060		Pump Unit	1		
4.01	508098510020	2	Motor	1		
4.02	508098520008	2	Brush	1		
4.03	508098520007	2	Cables	1		
4.04	508098510034	2	Magnetic Valve	1		
4.05	508098510021	2	Switch	1		
4.06	508098510053	2	Gear Pump	1		
4.07	508098510023	2	Tank Kit	1		
4.08	508598510009	2	Filter	1		
4.09	508098520037	2	Filter	1		
5	910200200033	1	Screw	3		
6	508024020102		Shield	1		Be sure to color your order
7	910200200171	1	Screw	1		
8	508024020103		Cover	1		
9	910401300017	1	Circlip	1		
10	508024010003		Cylinder	1		
10.01	508098510018		Seal Kit	1		
10.02	910701100019		Steel Ball	1		
10.03	508598510004		Seal Kit	1		
11	910200200036	1	Screw	7		
12	910400100005	1	Flat Washer	7		
13	910200200077	1	Screw	4		
14	910200200160	1	Screw	1		

## Chapter 3: Truck Frame

### 01 Truck Frame (508046038501)

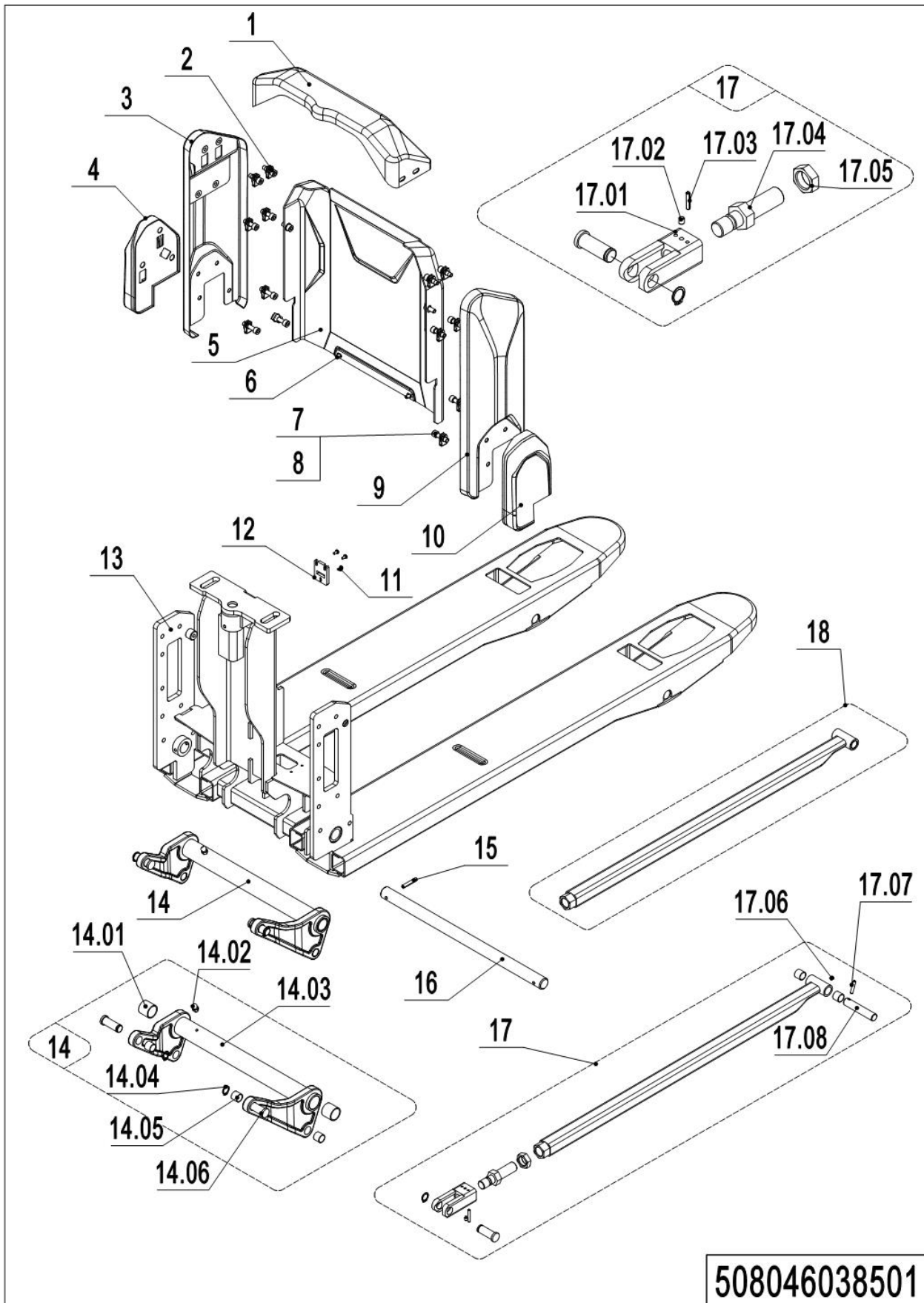


## 01 Truck Frame (508046038501)

No.	Item Code	Mark	Item Description	Qty.	Substitute	Note
1	508038520100		Cover	1		Be sure to color your order
2	910200200181	1	Screw	4		
3	508038510100		Side cover (left)	1		Be sure to color your order
4	508038510102		Side Cover (left 540)	1		Be sure to color your order
4	508038510106		Side Cover (left 61mm/	1		Be sure to color your order
5	508038520111		Front Panel	1		Be sure to color your order
6	910200500051	1	Screw	2		
7	940400400002		Cage Nut	14		
8	910200200157	1	Screw	10		
9	508038510101		Side cover (right)	1		Be sure to color your order
10	508038510103		Side Cover (right 540)	1		Be sure to color your order
10	508038510107		Side Cover (right 61mm/	1		Be sure to color your order
11	508038520109		Lock	1		
12	910200500034	1	Screw	3		
13	508038510004	2	Chassis (US540x800)	1		
13	508038530001	2	Chassis (540x915)	1		
13	508038510005	2	Chassis (540x1000)	1		
13	508038510000	2	Chassis (US540x1150)	1		
13	508038510009	2	Chassis (540x1220)	1		
13	508038510003	2	Chassis (US550x1150)	1		
13	508038510021	2	Chassis (61mm/540x1220)	1		Selection of 61mm height
14	508098510001		Rise Arm	1		540
14	508098510083		Rise Arm	1		550
14.01	940500100097		Bushing	2		
14.02	911200100015		Rise Arm	1		
14.03	508038510010		Rise Arm	1		540
14.03	508038510019		Rise Arm	1		550
14.04	910401300007		Circlip	4		
14.05	940500100083		Bushing	8		
14.06	508038520041		Pin	4		



## 01 Truck Frame (508046038501) Continuation

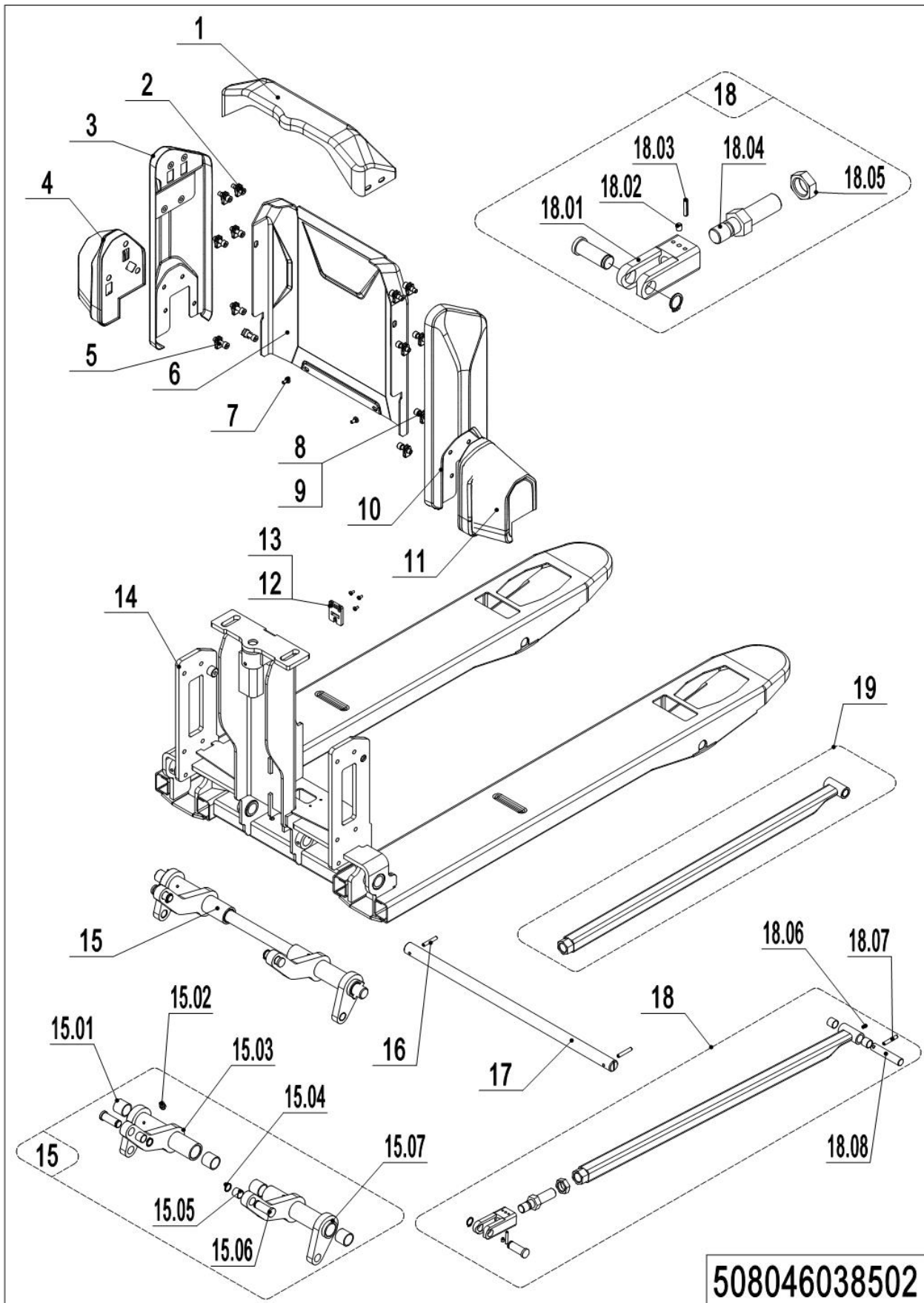


1= Supply as package. 2= Supply with constraints. 3= Phasing-out supply. 4= Supply as assembly. 5= Check other tables.

## 01 Truck Frame (508046038501) Continuation

No.	Item Code	Mark	Item Description	Qty.	Substitute	Note
15	910600400041	1	Spring Pin	2		
16	508038520027		Axle	1		
17	508098510038		Push Rod Kit (800)	2		
17	508098510006		Push Rod Kit (915)	2		
17	508098510043		Push Rod Kit (1000)	2		
17	508098510002		Push Rod Kit (1150)	2		
17	508098510044		Push Rod Kit (1220)	2		
17.01	508038520028		Push Rod Fork	2		
17.02	910201000005	1	Screw	2		
17.03	910600500001	1	Spring Pin	4		
17.04	508038520029		Threaded Rod	2		
17.05	910300400008	1	Nut	2		
17.06	911200100001	1	Oil Cup	2		
17.07	910600400024	1	Spring Pin	2		
17.08	502338520030		Axle	2		
17.08	508038520104		Axle	2		Selection of 61mm height
18	508038510016	2	Push Rod (800)	2		
18	508038510014	2	Push Rod (915)	2		
18	508038510017	2	Push Rod (1000)	2		
18	508038510011	2	Push Rod (1150)	2		
18	508038510024	2	Push Rod (1220)	2		
18	508038510022	2	Push Rod (1220)	2		Selection of 61mm height

## 02 Truck Frame (508046038502)

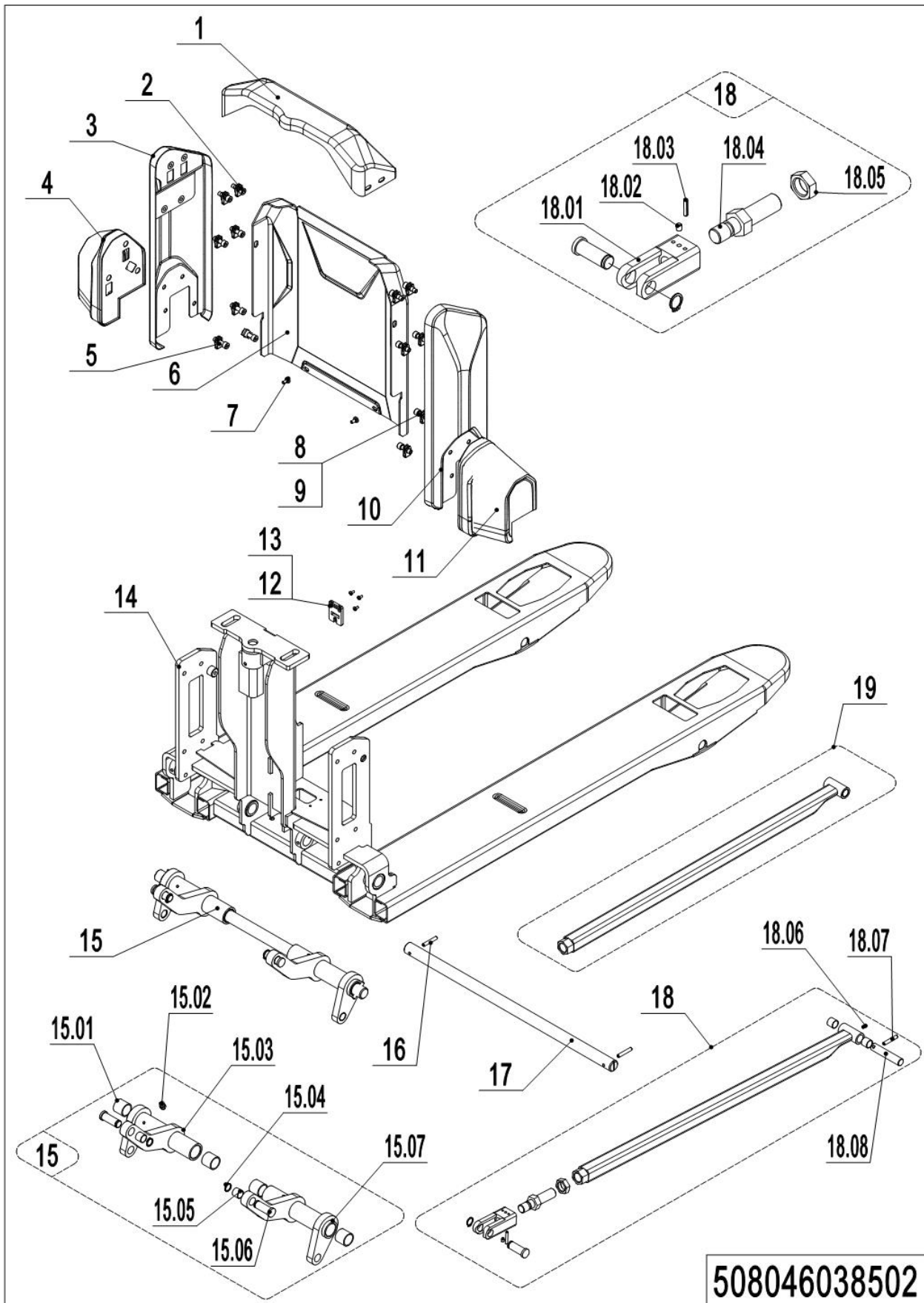


1= Supply as package. 2= Supply with constraints. 3= Phasing-out supply. 4= Supply as assembly. 5= Check other tables.

## 02 Truck Frame (508046038502)

No.	Item Code	Mark	Item Description	Qty.	Substitute	Note
1	508038520100		Cover	1		
2	910200200181	1	Screw	4		
3	508038510100		Side cover (left)	1		Be sure to color your order
4	508038510104		Side Cover (left 685)	1		Be sure to color your order
5	910200200170		Screw	4		
6	508038520111		Front Panel	1		Be sure to color your order
7	910200500051	1	Screw	2		
8	940400400002		Cage Nut	14		
9	910200200157	1	Screw	10		
10	508038510101		Side cover (right)	1		Be sure to color your order
11	508038510105		Side Cover (right 685)	1		Be sure to color your order
12	508038520109		Lock	1		
13	910200500034	1	Screw	3		
14	508038510008	2	Chassis (685x800)	1		
14	508038510002	2	Chassis (US685x915)	1		
14	508038510006	2	Chassis (685x1000)	1		
14	508038510001	2	Chassis (US685x1150)	1		
14	508038510025	2	Chassis (685x1220)	1		
15	508098510003		Rise Arm	1		
15.01	940500100097		Bushing	2		
15.02	911200100015	1	Rise Arm	2		
15.03	508038510012		Rise Arm	1		
15.03	508038510020		Rise Arm	1		Selection of 61 mm height
15.04	910401300007		Circlip	4		
15.05	940500100083		Bushing	8		
15.06	508038520041		Pin	4		
15.07	508038510013		Rise Arm	1		
15.07	508038510023		Rise Arm	1		Selection of 61 mm height
16	910600400041	1	Spring Pin	2		
17	508038520035		Axle	1		

## 02 Truck Frame (508046038502) Continuation



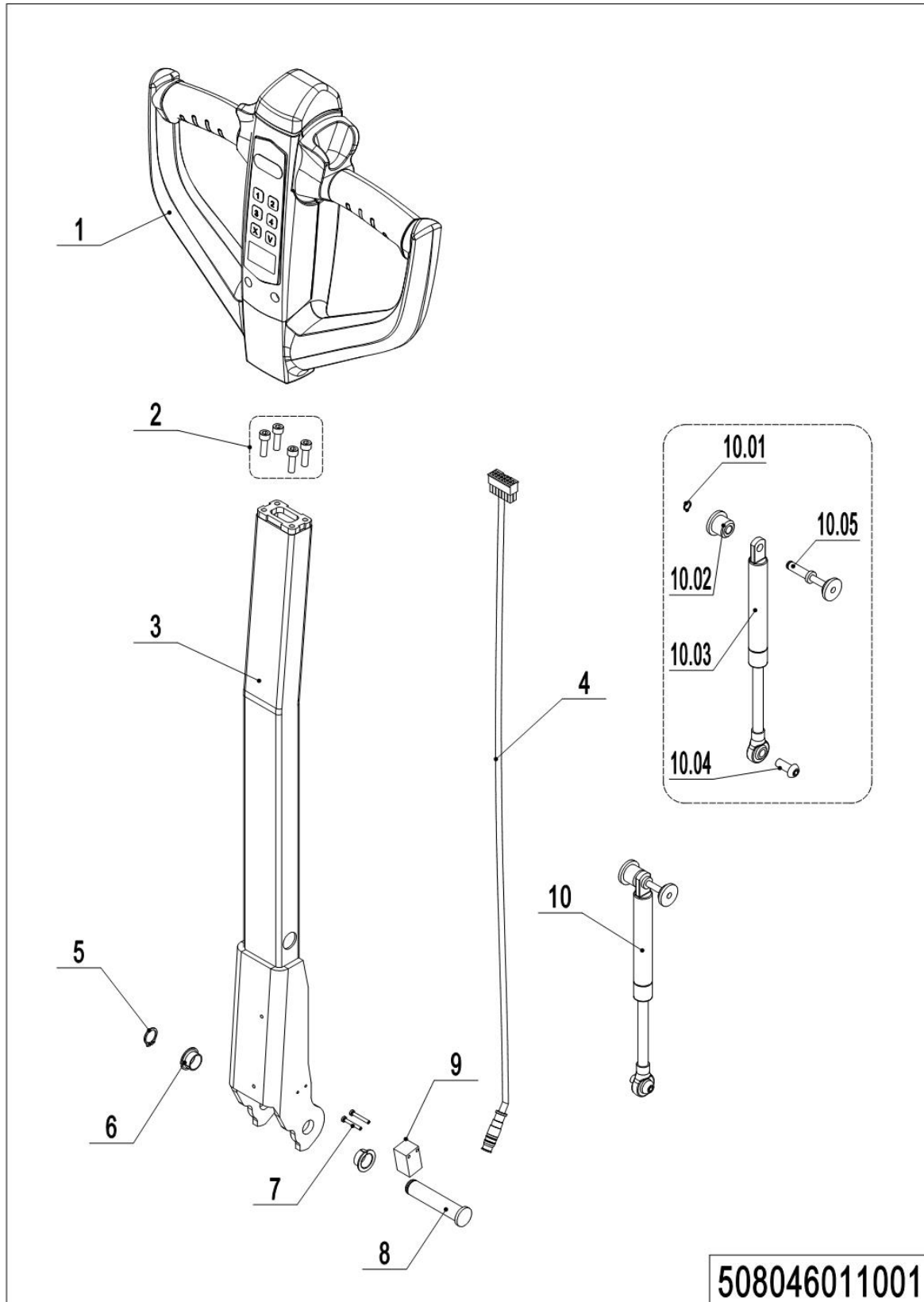
1= Supply as package. 2= Supply with constraints. 3= Phasing-out supply. 4= Supply as assembly. 5= Check other tables.

## 02 Truck Frame (508046038502) Continuation

No.	Item Code	Mark	Item Description	Qty.	Substitute	Note
18	508098510038		Push Rod Kit (800)	2		
18	508098510006		Push Rod Kit (915)	2		
18	508098510043		Push Rod Kit (1000)	2		
18	508098510002		Push Rod Kit (1150)	2		
18	508098510044		Push Rod Kit (1220)	2		
18.01	508038520028		Push Rod Fork	2		
18.02	910201000005	1	Screw	2		
18.03	910600500001	1	Spring Pin	4		
18.04	508038520029		Threaded Rod	2		
18.05	910300400008	1	Nut	2		
18.06	911200100001	1	Oil Cup	2		
18.07	910600400024	1	Spring Pin	2		
18.08	502338520030		Axle	2		
19	508038510016	2	Push Rod (800)	2		
19	508038510014	2	Push Rod (915)	2		
19	508038510017	2	Push Rod (1000)	2		
19	508038510011	2	Push Rod (1150)	2		
19	508038510024	2	Push Rod (1220)	2		

## Chapter 4: Steering System, Braking System, Wheels

### 01 Tiller Unit(508046011001)

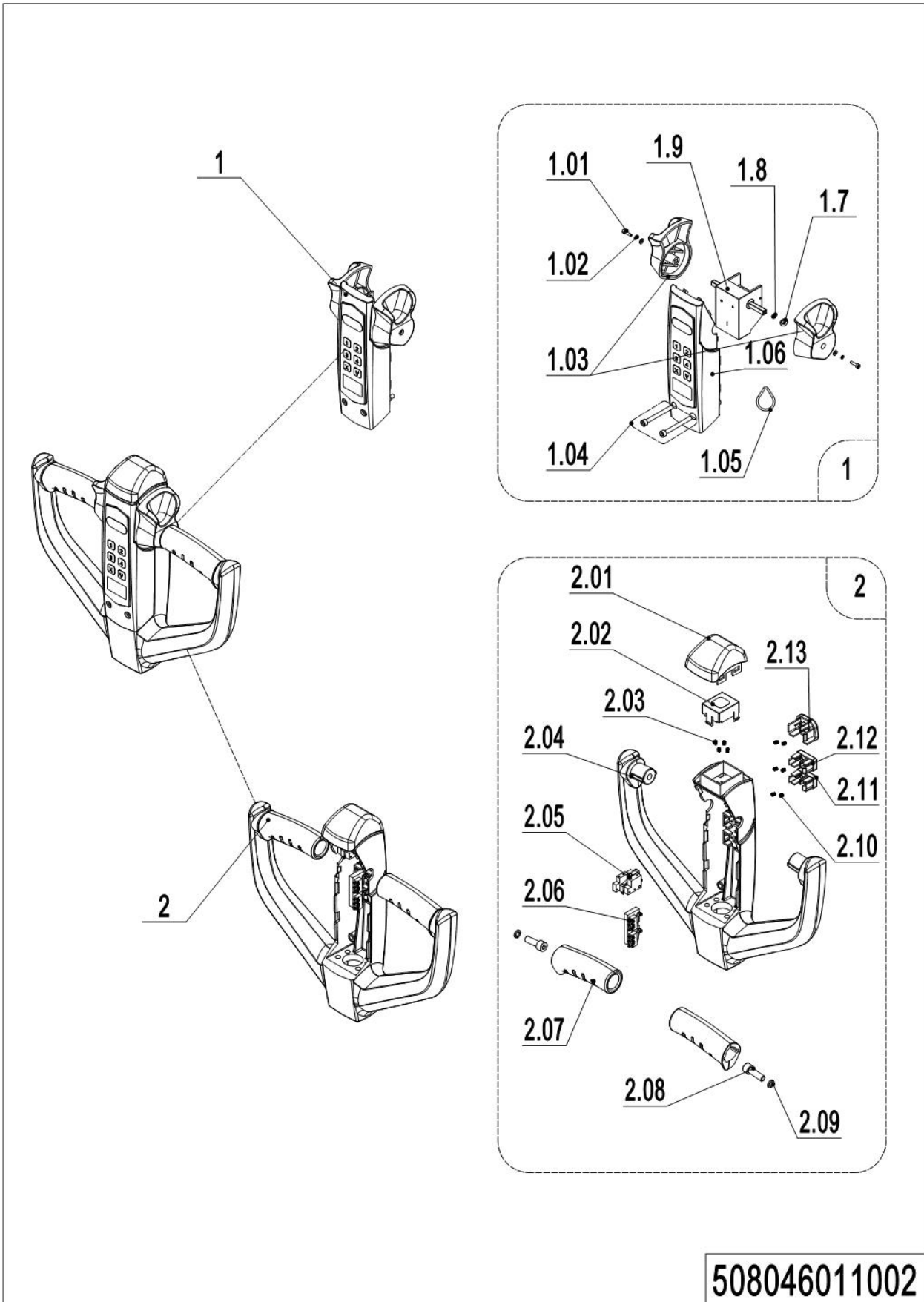


## 01 Tiller Unit(508046011001)

No.	Item Code	Mark	Item Description	Qty.	Substitute	Note
1	922100100013		Control Handle	1		
1	922100100019		Control Handle	1		IC Card
2	910200200036	1	Screw	4		
3	508011010000		Tiller	1		
4	508033010001		Wire Harness	1		
5	910401300006		Circlip	1		
6	940500200001		Bushing	2		
7	941101100001	1	Screw	2		
8	508011020004		Pin	1		
9	508033010011	3	Proximity Switch	1	920200400027	
9	920200400027		Proximity Switch	1		
10	508098510084		Gas Spring Kit	1		
10.1	910401300001		Circlip	1		
10.2	508011020005		Fixing Base	1		
10.3	508011010001		Gas Spring	1		
10.4	941100100011	1	Screw	1		
10.5	508011010002		Pin	1		



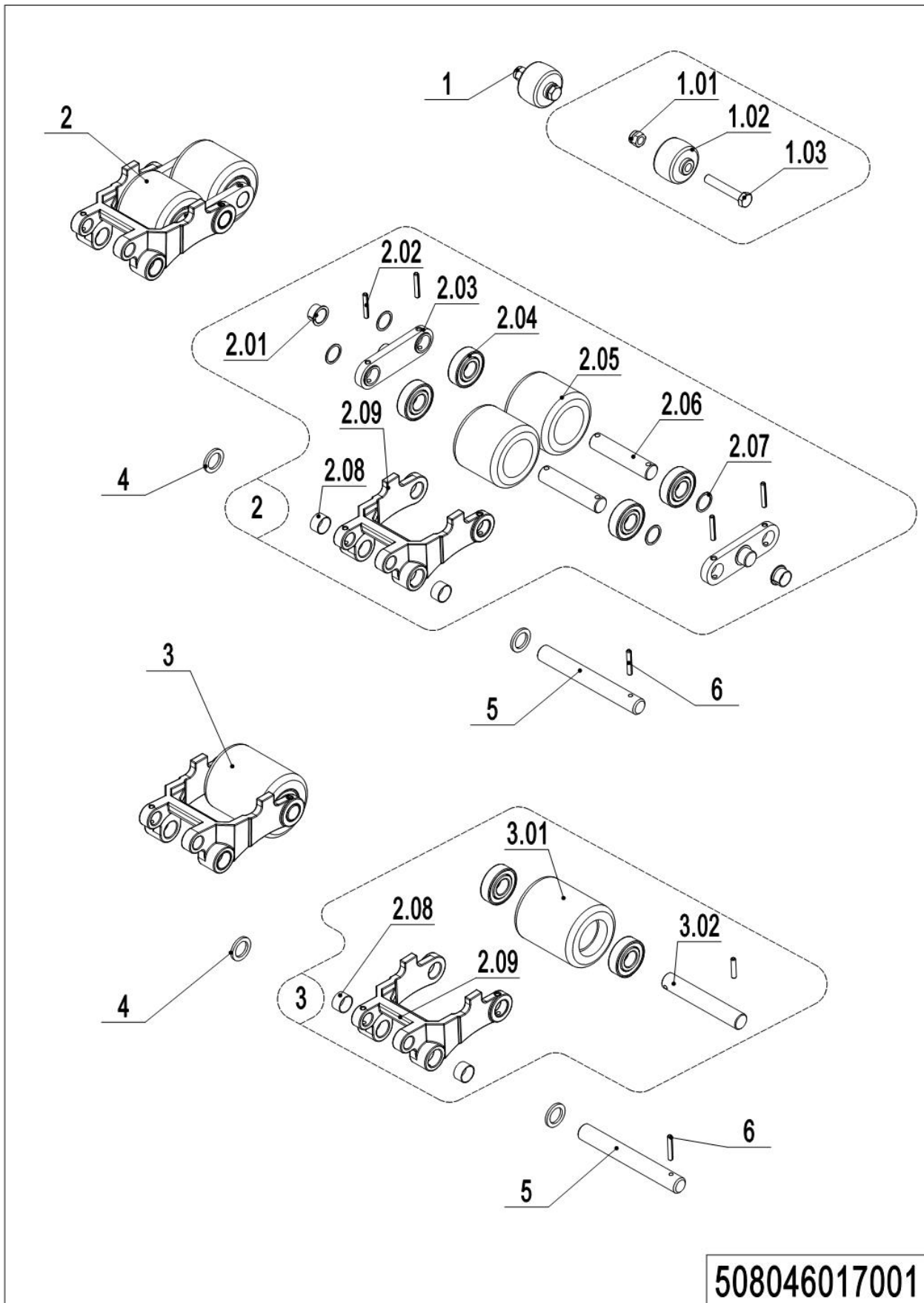
**02 Tiller(508046011002)**



## 02 Tiller(508046011002)

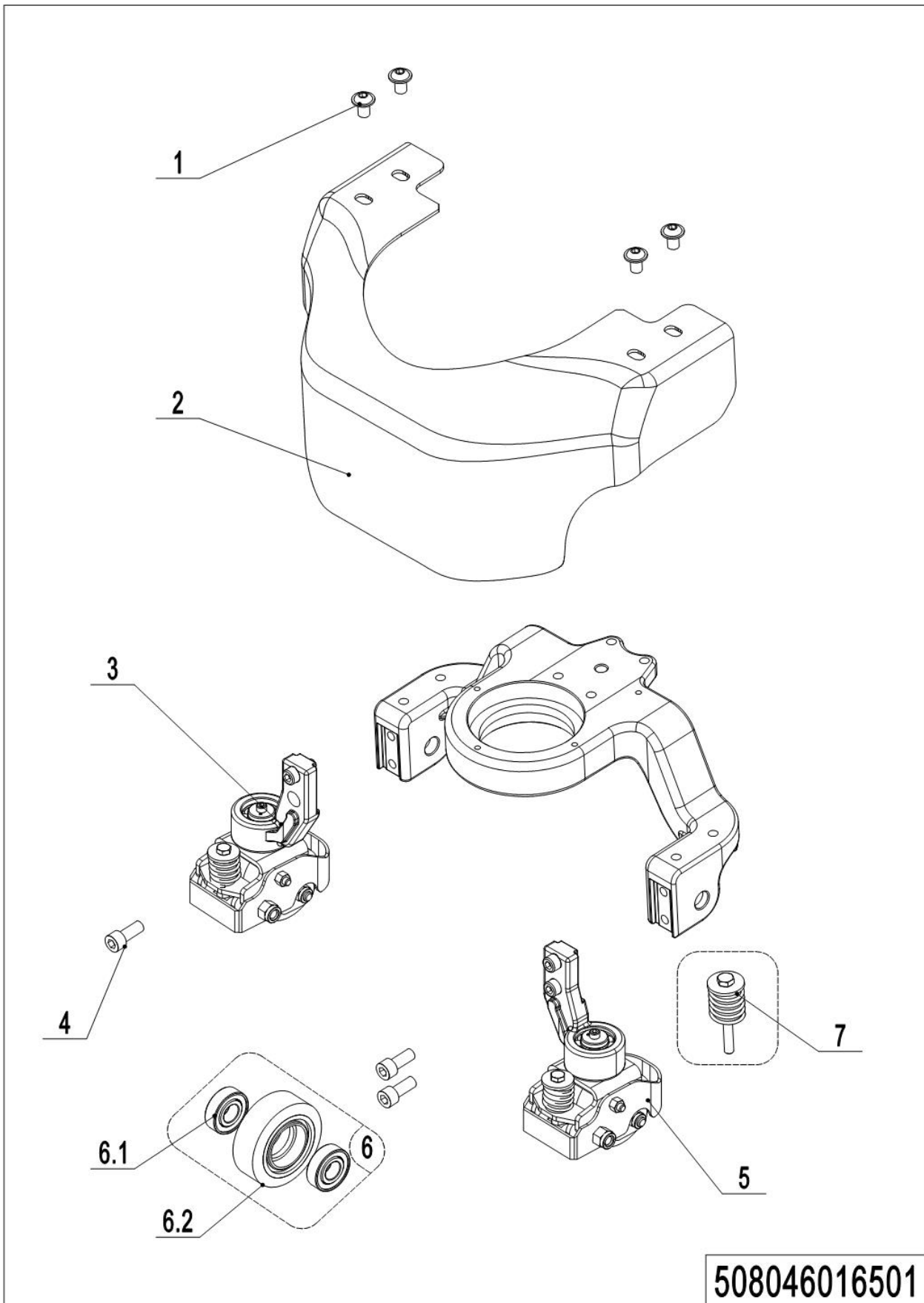
No.	Item Code	Mark	Item Description	Qty.	Substitute	Note
1	508098510032		Handle Cap Kit	1		Be sure to color your order
1	508098510056		Handle Cap Kit	1		Be sure to color your order(IC Card)
1.01	910200200003	1	Screw	2		
1.02	910400500002	1	Spring Washer	2		
1.03	508098520044		Traction lever	1		
1.04	910200200159	1	Screw	2		
1.05	508098520027		ID Card	1		With a swipe function
1.06	508098510039		Display Screen kit	1		
1.07	508098520020		Traction lever	1		
1.08	508098520016		Bushing	2		
1.09	508098510028		Accelerator	1		
1.09	508098510055		Accelerator	1		IC Card
2	508098510031		Handle Cap Kit	1		Be sure to color your order
2.01	508098520018		Cap, Break Switch	1		
2.02	508098520019		Bracket	1		
2.03	502311020018		Spring	4		
2.04	508098520012		Handle Cap	1		Be sure to color your order
2.05	508098510029		Microswitch Kits	1		
2.06	508098510030		Microswitch Kits	1		
2.07	508098520013		Handle	2		Be sure to color your order
2.08	910200200058	1	Screw	2		
2.09	910400500006	1	Spring Washer	2		
2.10	502311020022		Spring	6		
2.11	508098520031		Button	1		Be sure to color your order
2.12	508098520030		Button	1		Be sure to color your order
2.13	508098520029		Horn Button	1		Be sure to color your order

### 03 Load Wheel (Tandem) (508046017001)



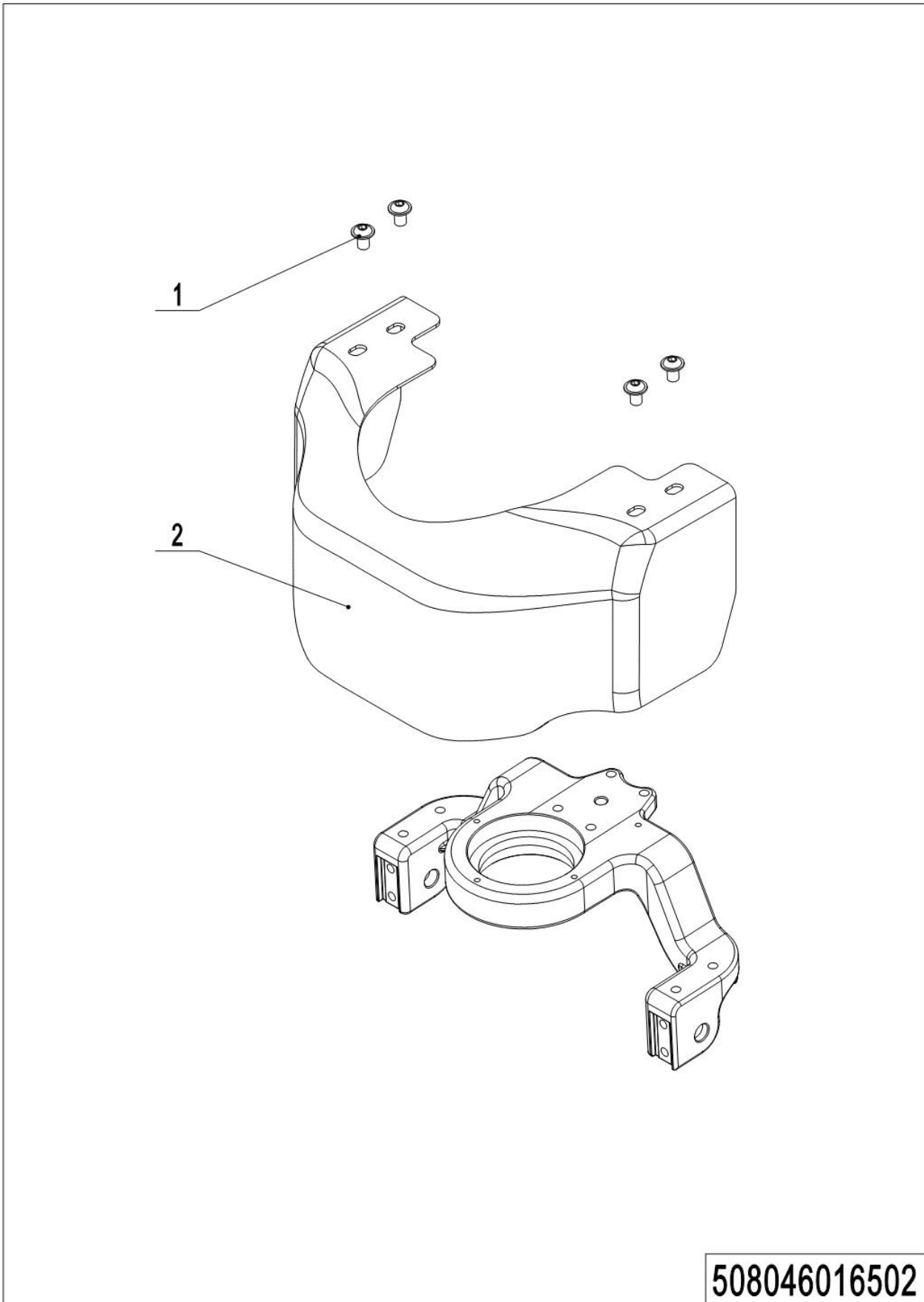
## 03 Load Wheel (Tandem) ( 508046017001)

No.	Item Code	Mark	Item Description	Qty.	Substitute	Note
1	502398510003		Pulley components	2		
1.01	910300500005	1	Nut	2		
1.02	505638520039		Running Pulley	2		
1.02	506238520041		Running Pulley	2		Selection of 61 mm height
1.03	941100200019	1	Bolt	2		
2	508098510049		Wheel	2		
2.01	940500200038		Bushing	4		
2.01	940500200005		Bushing	4		Selection of 61 mm height
2.02	910600400027	1	Spring Pin	8		
2.03	502317020000		Plate	4		
2.03	302517020003		Plate	4		Selection of 61 mm height
2.04	910700200019		Bearing	8/4		Double / single
2.04	910700200018		Bearing	4		Selection of 61 mm height
2.05	940300300005		Wheel $\Phi$ 80x70	4		
2.05	940300300031		Wheel $\Phi$ 60x70	4		Selection of 61 mm height
2.06	502317020001		Axle	4		
2.06	302517020002		Axle	4		Selection of 61 mm height
2.07	940600500013		Washer	8/4		Double / single
2.07	302517020005		Washer	8		Selection of 61 mm height
2.08	940500100088		Bushing	4		
2.09	508038520130		Riser	2		QT
2.09	508038520131		Riser	2		ZG
2.09	508038520085		Riser	2		Selection of 61 mm height
3	508098510050		Wheel	2		
3.01	940300300023		Wheel $\Phi$ 80x93	2		
3.02	301017020001		Axle	2		
4	325017020000		Washer	4		
5	508038520030		Axle	2		
5	508038520105		Pin	2		Selection of 61 mm height
6	910600400025		Spring Pin	2		

**04 Caster (508046016501)**

## 04 Caster(508046016501)

No.	Item Code	Mark	Item Description	Qty.	Substitute	Note
1	941100100005	1	Screw	4		
2	508016520000		Apron	1		35 mm off the ground
2	508016520008		Apron	1		45 mm off the ground
2	508016510006		Apron	1		35 mm off the ground
2	508016510011		Apron	1		45 mm off the ground
3	508016510002		Caster Assembly	2		
4	910200200182	1	Screw	4		
5	508016510005		Caster Assembly	1		
6	502398510015	2	Load Wheel Kit	2		
6.1	910700200018		Bearing	4		
6.2	940300300017		Wheel $\Phi$ 80x30	2		
7	508098510047		Spring Components	2		

**05 Caster(without) (508046016502)****508046016502**

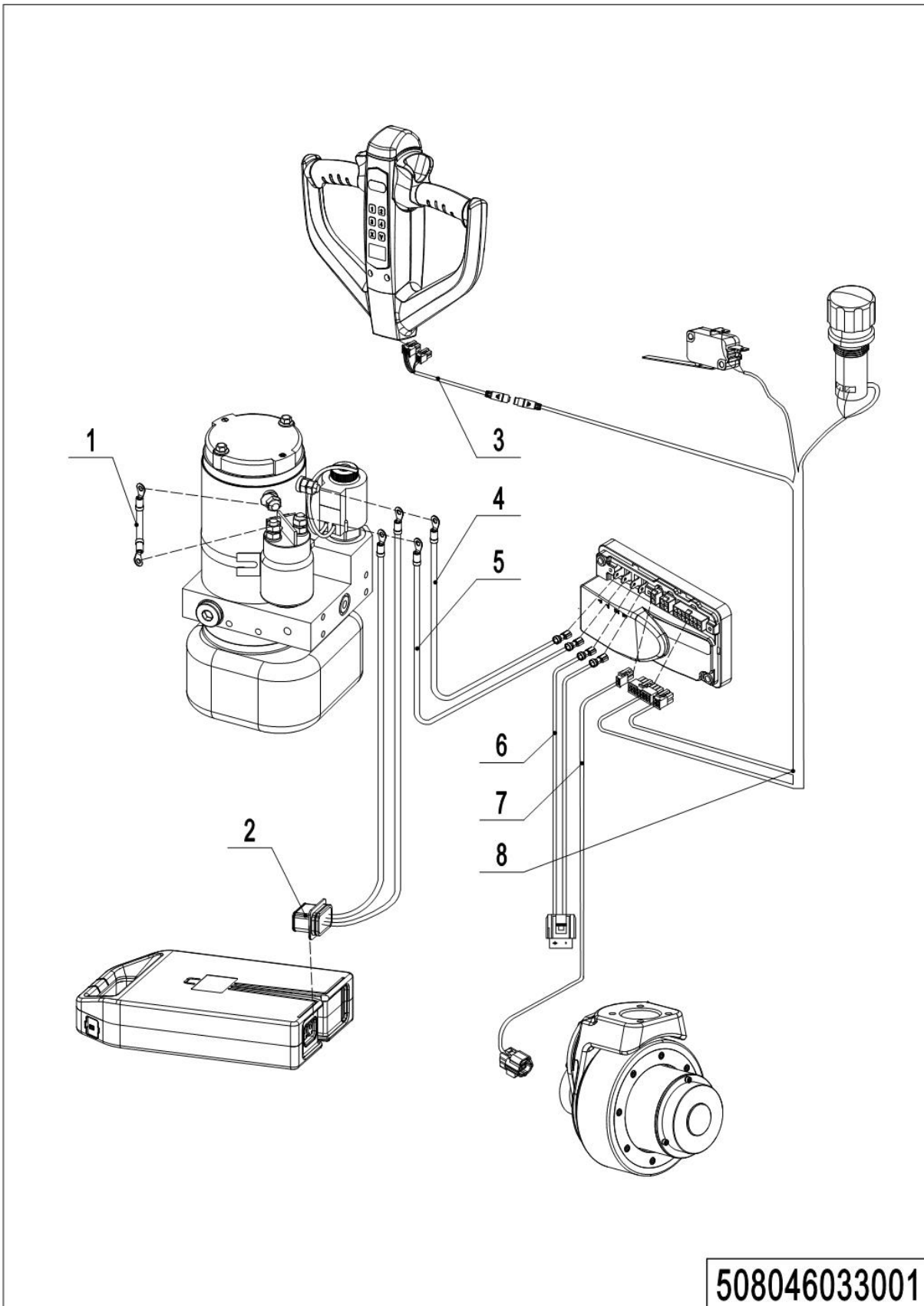
## 05 Caster(without) (508046016502)

No.	Item Code	Mark	Item Description	Qty.	Substitute	Note
1	941100100005	1	Screw	4		
2	508016520001		Apron	1		35 mm off the ground
2	508016520009		Apron	1		45 mm off the ground
2	508016510007		Apron			35 mm off the ground
2	508016510010		Apron			45 mm off the ground



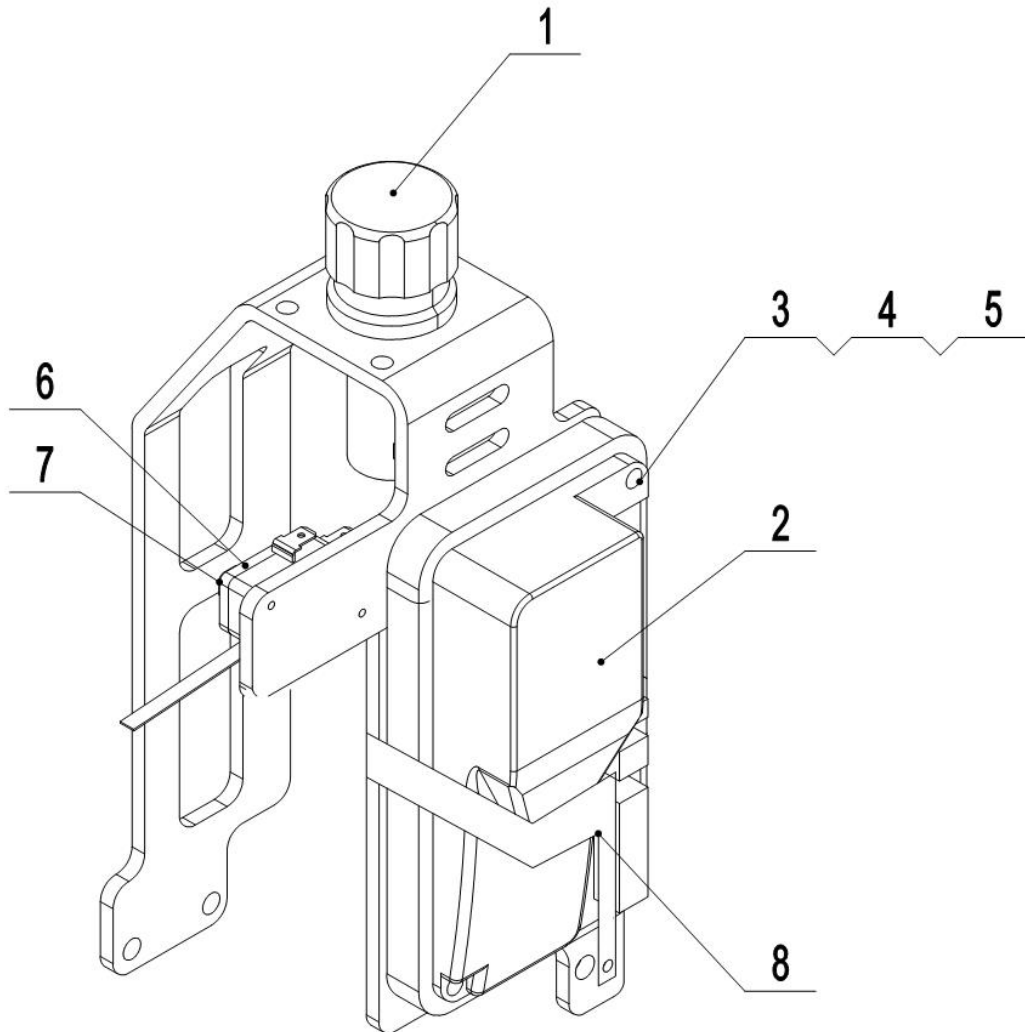
## Chapter 5: Electrical Parts

### 01 Wire Harness (508046033001)



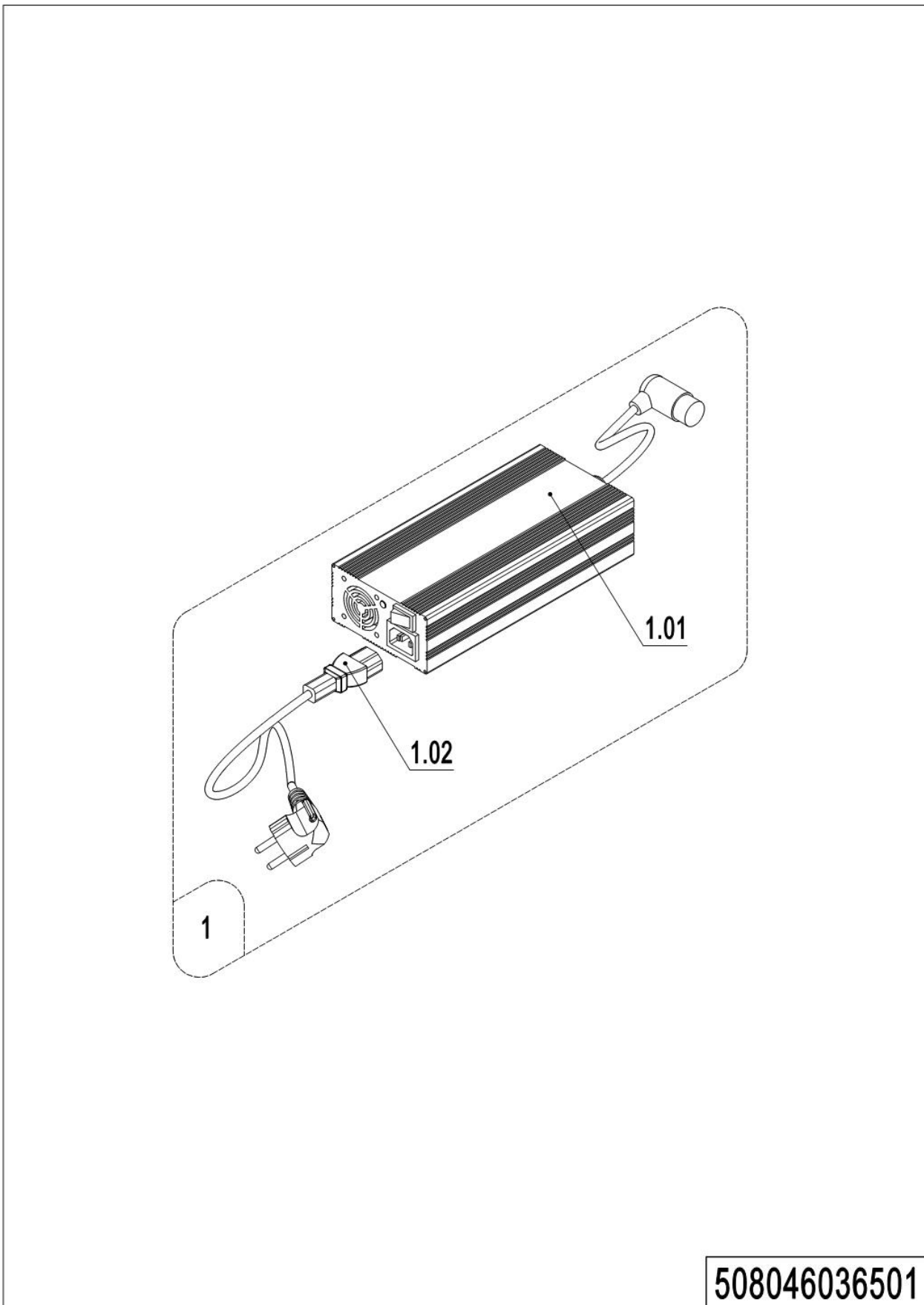
## 01 Wire Harness(508046033001)

No.	Item Code	Mark	Item Description	Qty.	Substitute	Note
1	508033010010		Wire Harness	1		
2	508033010003		Wire Harness	1		
3	508033010001		Wire Harness	1		
4	508033010005		Wire Harness	1		
5	508033010004		Wire Harness	1		
6	508033010006		Wire Harness	1		
6	508033010018		Wire Harness	1		
7	508033010007		Wire Harness	1		
8	508033010000		Wire Harness	1		
8	508033010009		Wire Harness	1		

**02 Controller (508046033002)****508046033002**

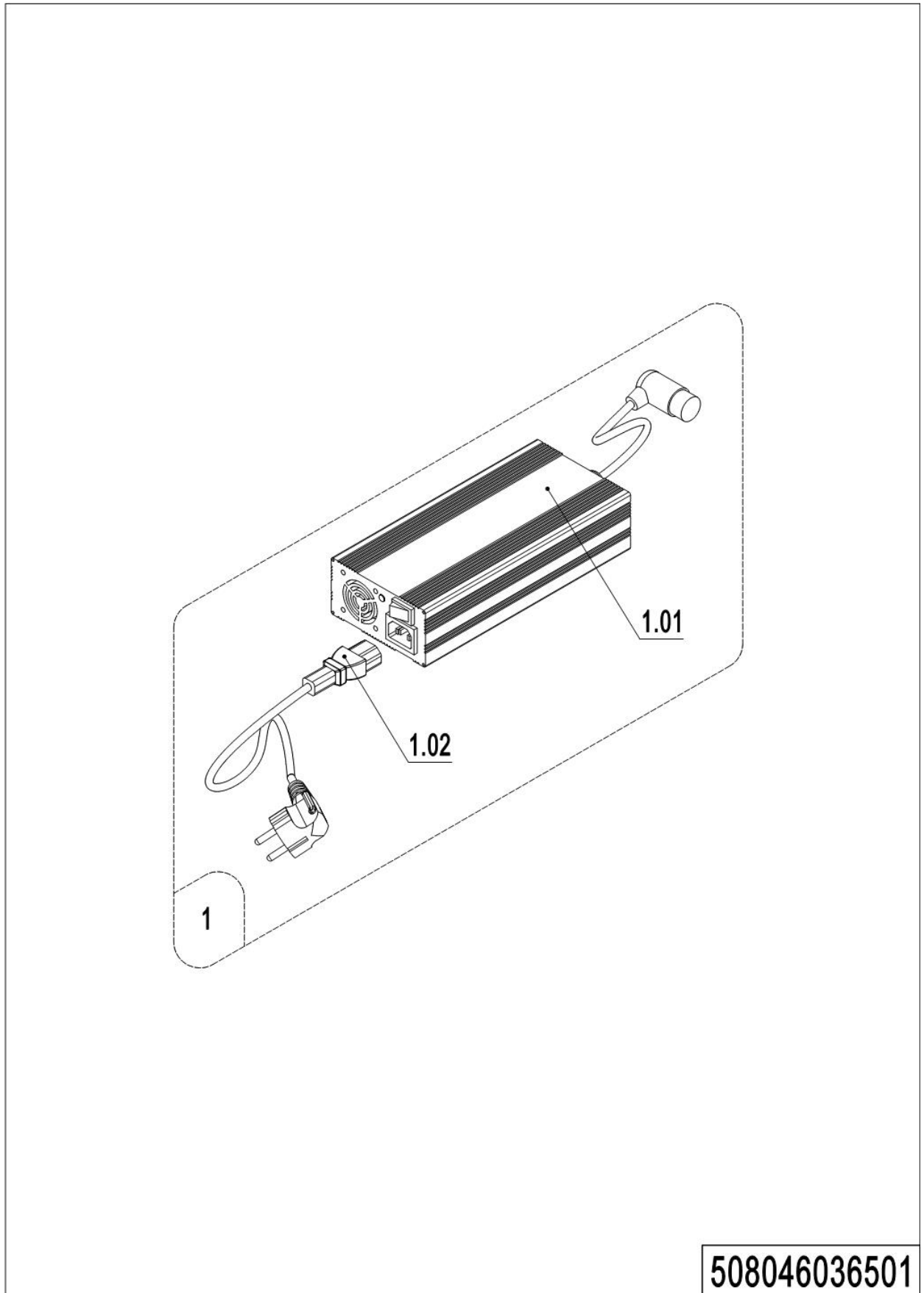
## 02 Controller(508046033002)

No.	Item Code	Mark	Item Description	Qty.	Substitute	Note
1	920200100015		Emergency Button	1		
2	921400100081		Controller	1		
3	910400100004	1	Flat Washer	2		
4	910400500004	1	Spring Washer	2		
5	910200200025	1	Screw	2		
6	505698520008	1	Screw	2		
7	920200300012		Microswitch	1		
8	508033020000		Bracket	1		

**03 Charger (508046036501)****508046036501**

## 03 Charger (508046036501)

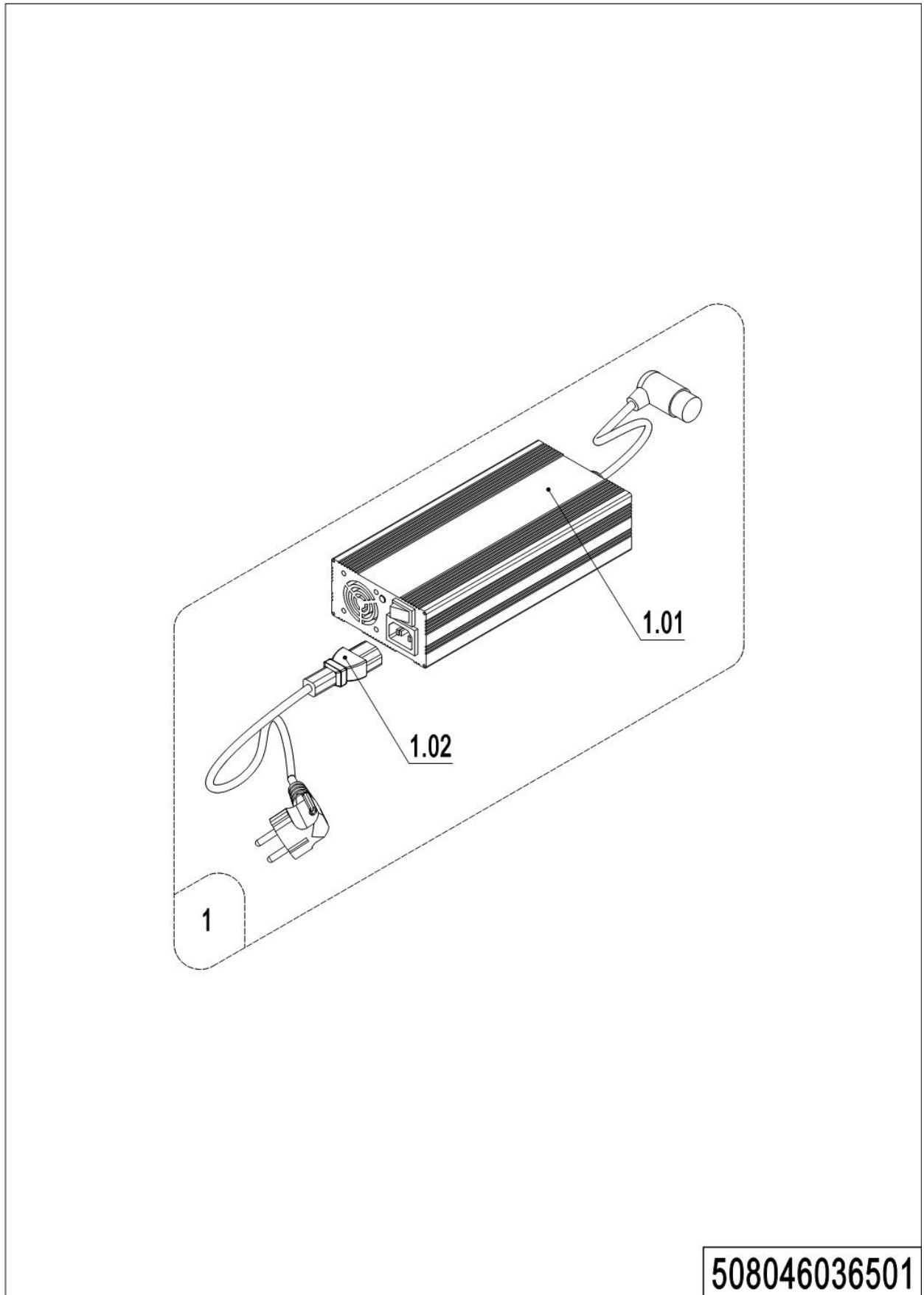
No.	Item Code	Mark	Item Description	Qty.	Substitute	Note
1	508036510013		Charger24V12A (Asia)	1		QQE
1	508036510014		Charger24V12A (ENG)	1		QQE
1	508036510015		Charger24V12A (US)	1		QQE
1	508036510016		Charger24V12A (EU)	1		QQE
1	508036510017		Charger24V12A (AUS)	1		QQE
1	508036510018		Charger24V12A (ITA)	1		QQE
1	508036510019		Charger24V12A (SWE)	1		QQE
1	508036510020		Charger24V12A (ISR)	1		QQE
1	508036510021		Charger24V12A (BRA)	1		QQE
1	508036510022		Charger24V12A (ARG)	1		QQE
1	508036510038		Charger24V12A (ZA)	1		QQE
1	508036510037		Charger24V12A (IND)	1		QQE
1	508036510041		Charger24V12A(Asia)	1		WT
1	508036510042		Charger24V12A(ENG)	1		WT
1	508036510043		Charger24V12A(US)	1		WT
1	508036510044		Charger24V12A(EU)	1		WT
1	508036510045		Charger24V12A(AUS)	1		WT
1	508036510046		Charger24V12A(ITA)	1		WT
1	508036510047		Charger24V12A((SWE))	1		WT
1	508036510048		Charger24V12A(ISR)	1		WT
1	508036510049		Charger24V12A(BRA)	1		WT
1	508036510050		Charger24V12A(ARG)	1		WT
1	508036510051		Charger24V12A(ZA)	1		WT
1	508036510052		Charger24V12A(IND)	1		WT
1	921000200353		Charger 24V8A (Aisa-CHN)	1		SS
1	921000200464		Charger 24V8A (Aisa-ENG)	1		SS
1	508036510002		Charger24V8A (ENG)	1		SS
1	508036510003		Charger24V8A ((US, JAP)	1		SS
1	508036510004		Charger24V8A (EU)	1		SS
1	508036510005		Charger24V8A (AUS)	1		SS

**03 Charger (508046036501) Continuation**

## 03 Charger (508046036501)Continuation

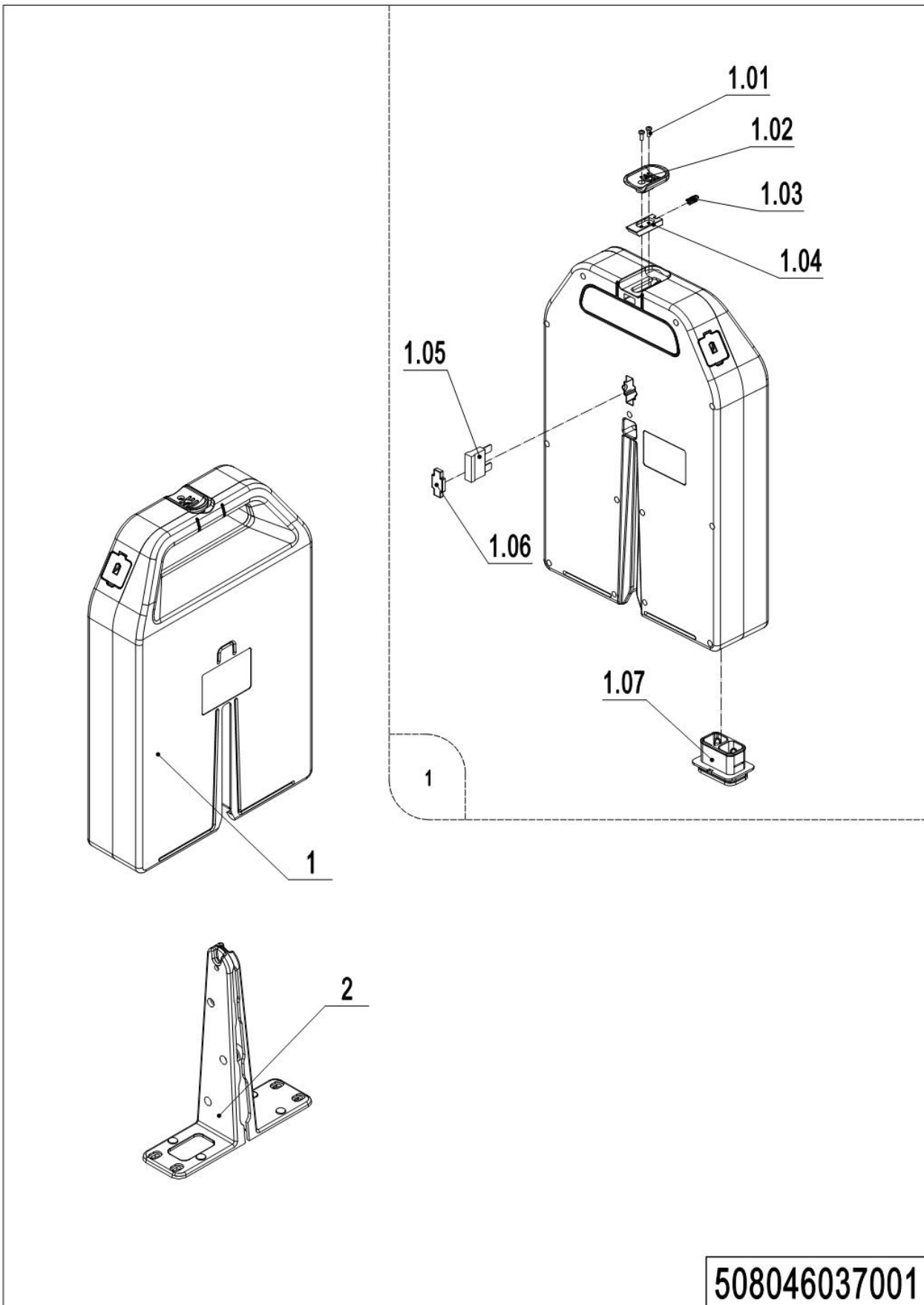
No.	Item Code	Mark	Item Description	Qty.	Substitute	Note
1	508036510006		Charger24V8A (ITA)	1		SS
1	508036510007		Charger24V8A (SWE)	1		SS
1	508036510008		Charger24V8A (ISR)	1		SS
1	508036510009		Charger24V8A (BRA)	1		SS
1	508036510010		Charger24V8A (ARG)	1		SS
1	508036510032		Charger24V8A (EU)	1		JN
1	508036510033		Charger24V8A (IND)	1		SS
1	508036510035		Charger24V8A (EU, US)	1		SS
1	508036510036		Charger24V8A (ZA)	1		SS
1	508036510040		Charger24V8A (US)	1		QQE
1	921000200351		Charger 24V5A (Aisa-CHN)	1		SS
1	921000200463		Charger 24V5A (Aisa-ENG)	1		SS
1. 01	508036510025		Charger24V5A (EU)	1		SS
1. 01	921000200363		Charger 24V12A	1		QQE
1. 01	921000200353		Charger 24V8A (Aisa-CHN)	1		SS
1. 01	921000200464		Charger 24V8A (Aisa-ENG)	1		SS
1. 01	921000200355		Charger 24V8A	1		SS (CE)
1. 01	921000200354		Charger 24V8A	1		SS
1. 01	921000200427		Charger 24V8A (EU)	1		ZJ
1. 01	921000200466		Charger 24V8A	1		QQE
1. 01	921000200351		Charger 24V5A (Aisa-CHN)	1		SS
1. 01	921000200463		Charger 24V5A (Aisa-ENG)	1		SS
1. 01	921000200418		Charger 24V5A (EU)	1		SS
1. 02	921500200050		Power Cord (ARG)	1		
1. 02	921500200024		Power Cord (AUS)	1		
1. 02	921500200049		Power Cord (BRA)	1		
1. 02	921500200023		Power Cord (USA)	1		
1. 02	921500200022		Power Cord (EU)	1		
1. 02	921500200026		Power Cord (SWE)	1		
1. 02	921500200028		Power Cord (ISR)	1		



**03 Charger (508046036501) Continuation**

## 03 Charger (508046036501) Continuation

No.	Item Code	Mark	Item Description	Qty.	Substitute	Note
1.02	921500200025		Power Cord (ITA)	1		
1.02	921500200047		Power Cord (ENG)	1		
1.02	921500200027		Power Cord (ENG)	1		
1.02	921500200038		Power Cord (ZA)	1		

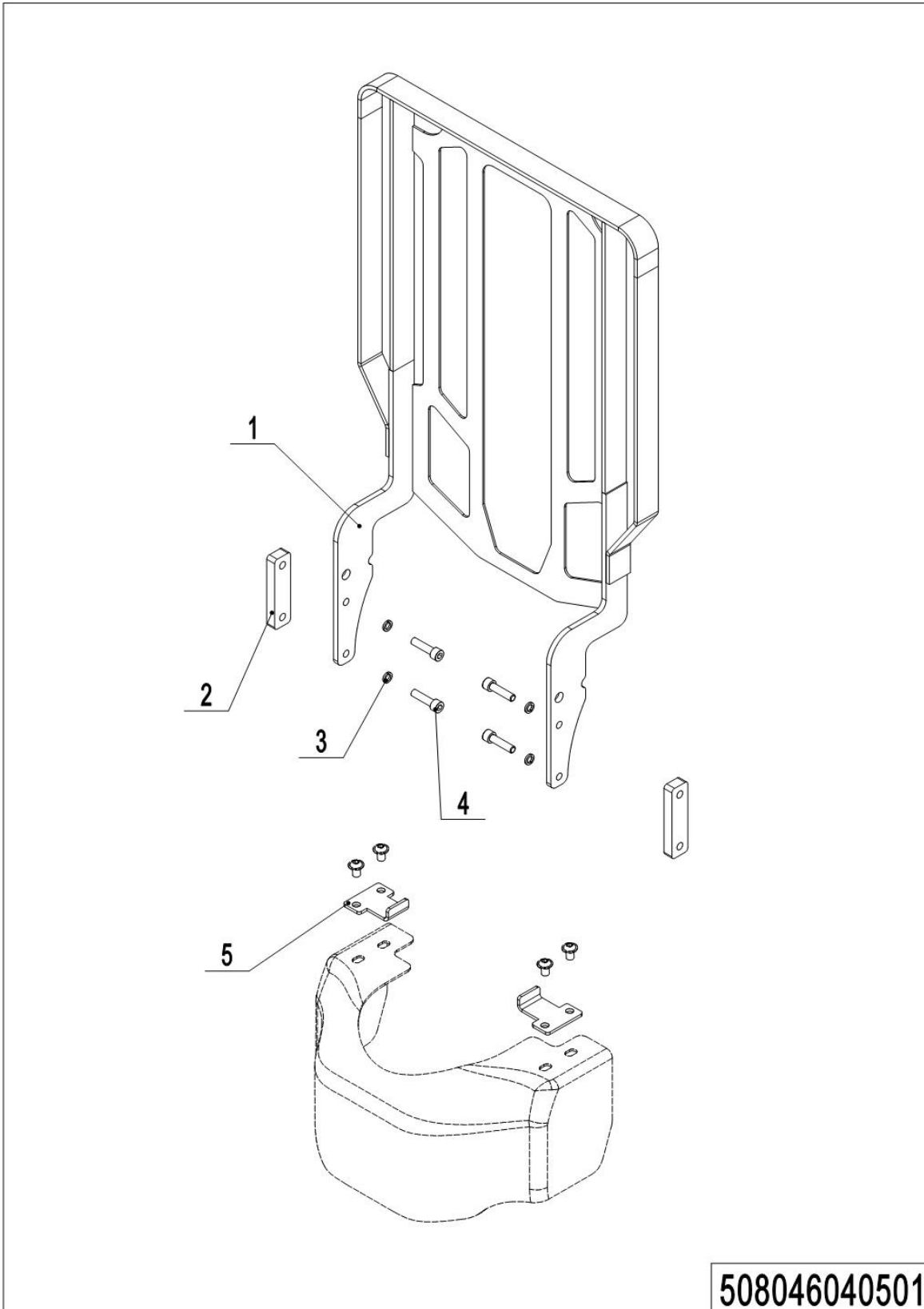
**04 Traction Battery (508046037001)**

## 04 Traction Battery (508046037001)

No.	Item Code	Mark	Item Description	Qty.	Substitute	Note
1	508037010003		Li Battery24V20Ah	1		HF
1	508037010004		Li Battery24V30Ah	1		HF
1	508037010005		Li Battery24V36Ah	1		HF
1	508037010006		Li Battery24V20Ah	1		FDE
1	508037010007		Li Battery24V30Ah	1		FDE
1	508037010008		Li Battery24V36Ah	1		FDE
1	508037010010		Li Battery24V20Ah	1		ZJ
1.01	910200500011	2	Screw	2		
1.02	508098520022	2	Plastic Handle	1		
1.03	508098520024	2	Spring	1		
1.04	508098520023	2	Fixing Mount	1		
1.05	920100200006		Fuse	1		
1.06	508098520021	2	waterproof plug	1		
1.07	508098510069	2	Rubber Cover	1		
2	508033010020		Battery Rack	1		

## Chapter 6: Special Parts

### 01 Load Backrest (508046040501)

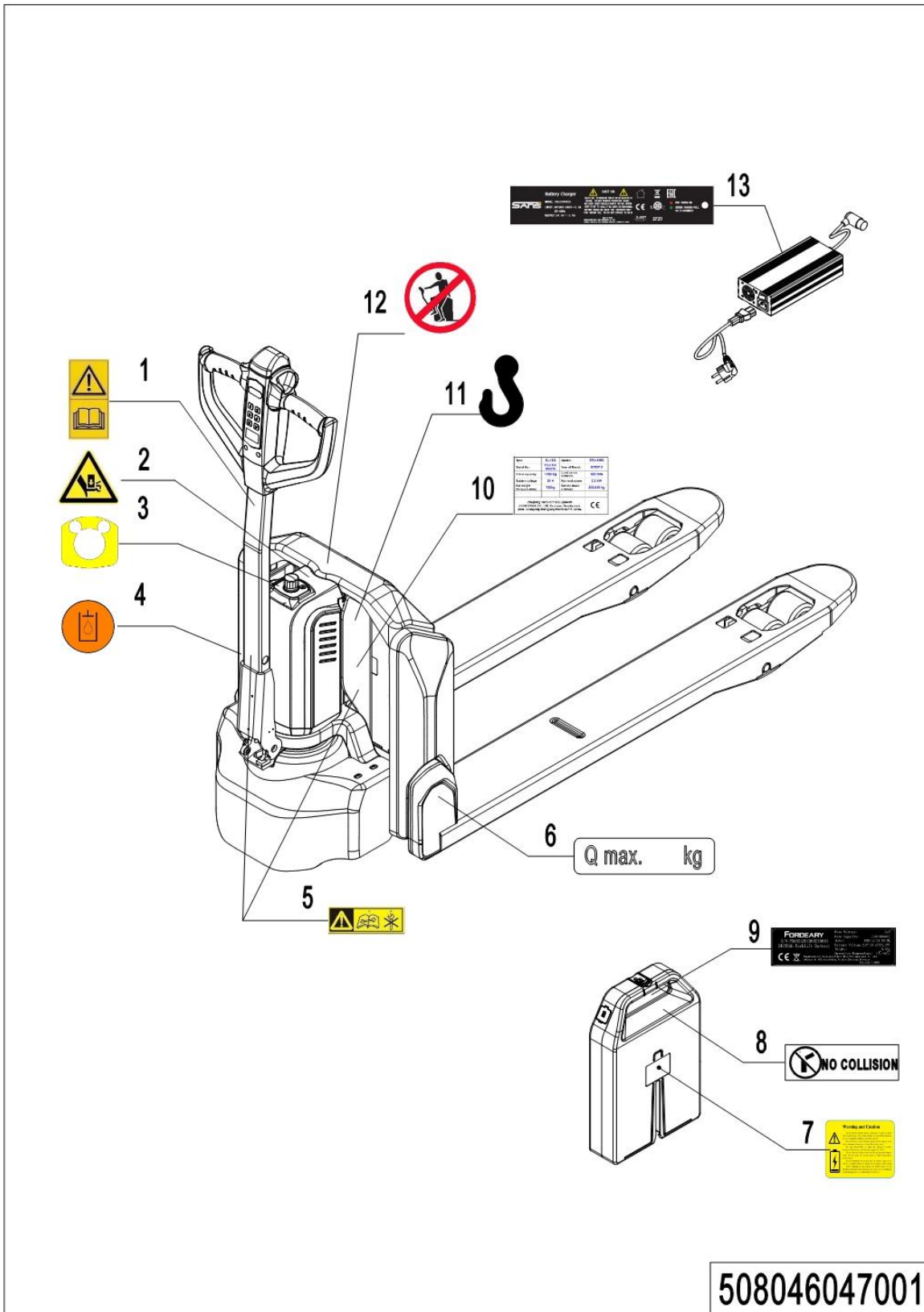


## 01 Load Backrest (508046040501)

No.	Item Code	Mark	Item Description	Qty.	Substitute	Note
1	508040510000	3	Load Backrest	1	508040510003	
1	508040510003		Load Backrest	1		
1	508040510001	3	Load Backrest	1	508040510004	
1	508040510004		Load Backrest	1		
1	508040510002	3	Load Backrest	1	508040510005	
1	508040510005		Load Backrest	1		
2	508040520000	1	Subplate	2		
3	910400500007	1	Spring Washer	4		
4	910200200079	1	Screw	4		
5	508040520017	1	Stop Plate	2		

Chapter 7: Others

01 Labels and Decals-EU(508046047001)



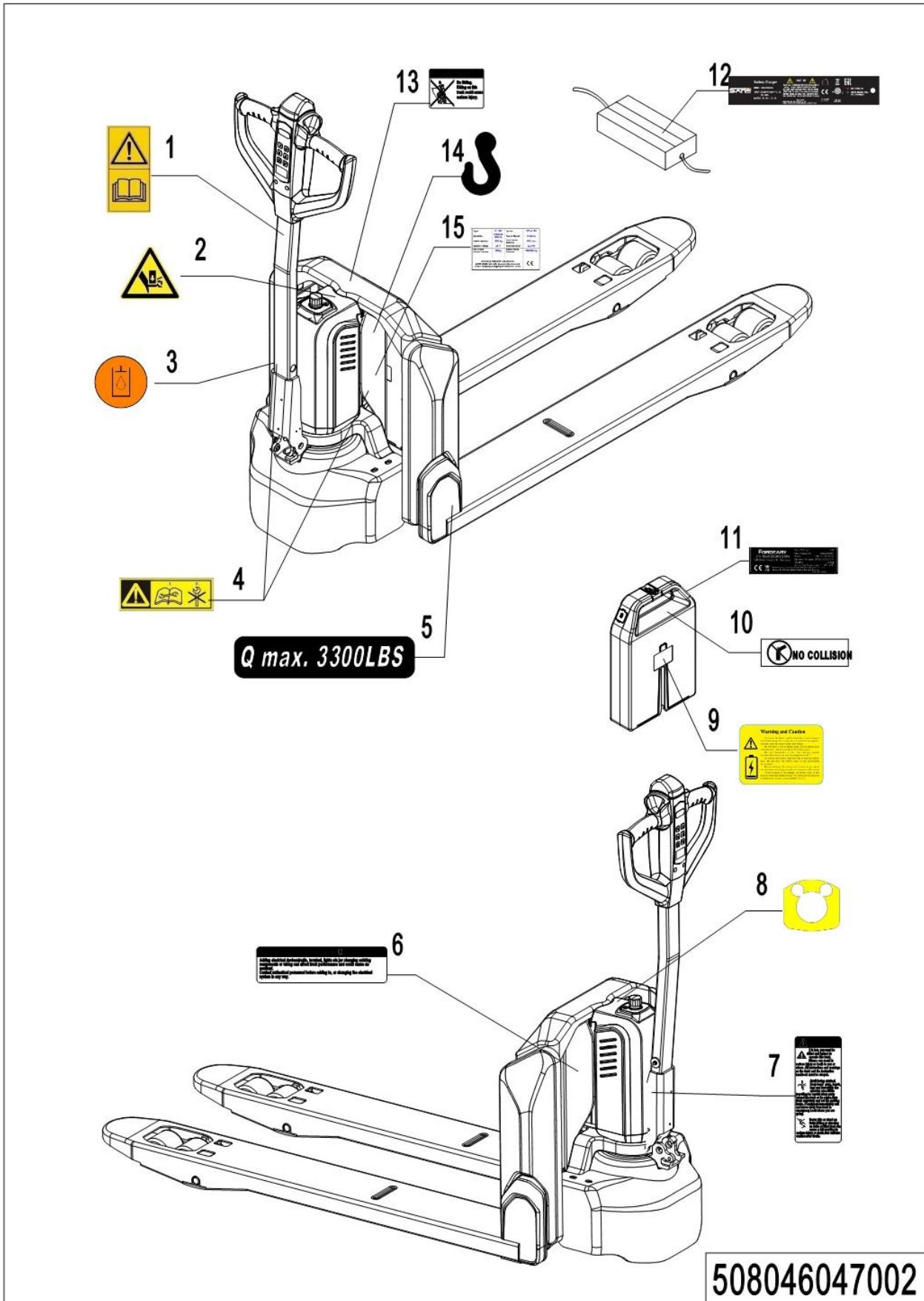
1= Supply as package. 2= Supply with constraints. 3= Phasing-out supply. 4= Supply as assembly. 5= Check other tables.

## 01 Labels and Decals-EU (508046047001)

No.	Item Code	Mark	Item Description	Qty.	Substitute	Note
1	941200300002		Label	1		
2	508047020007		Label	1		
3	508047020000		Label	1		
4	941200300003		Label	1		
5	508047020004		Label	2		
6	941200200009		Label	2		
7	508098520025		Label	1		
8	508047020002		Label	1		
9	508047020009		Label	1		
10	508047520002		Truck data plate	1		
11	941200300001		Label	2		
12	941200100003		Label	1		
13	508047520005		Label	1		



02 Labels and Decals-US (508046047002)



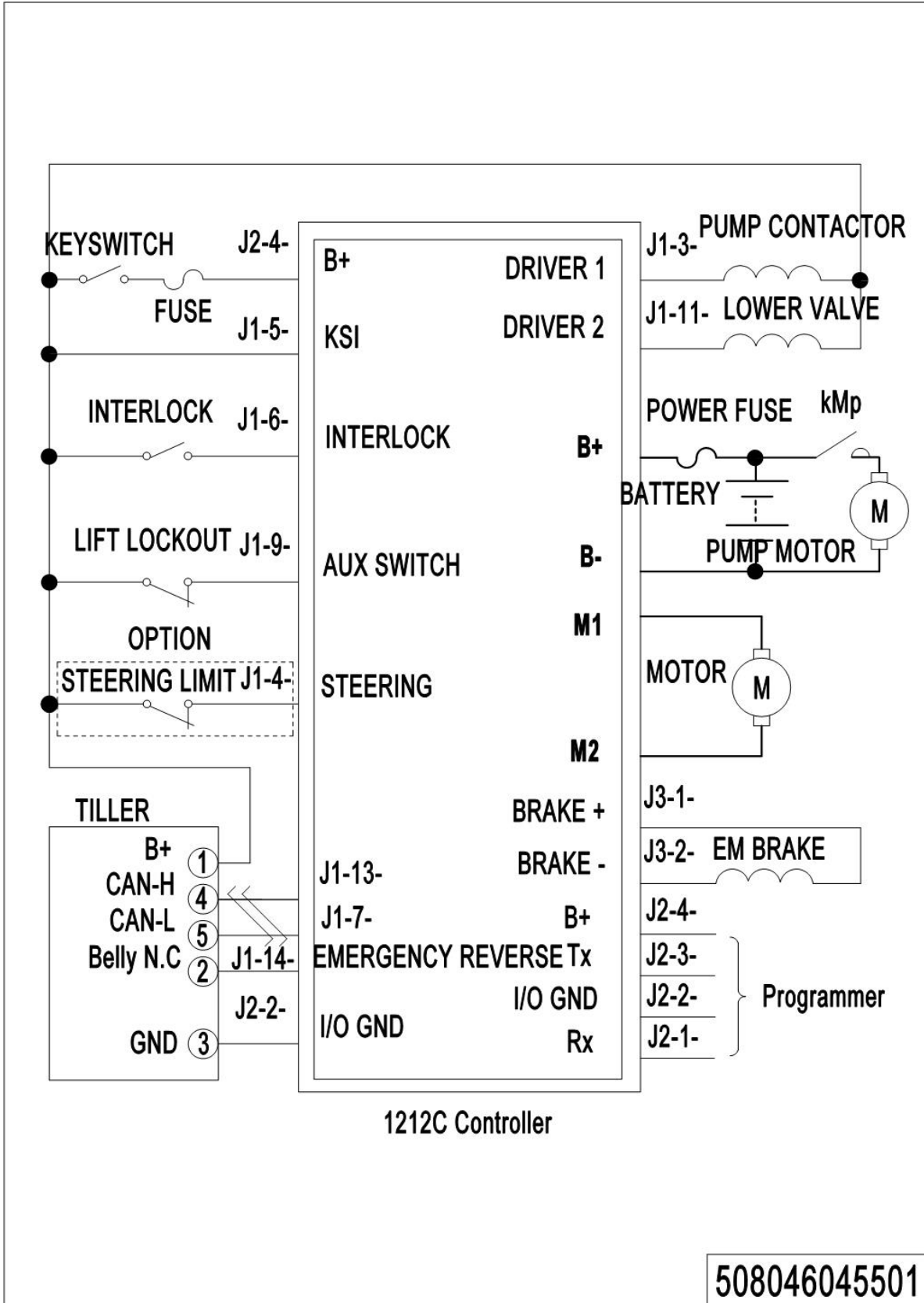
1= Supply as package. 2= Supply with constraints. 3= Phasing-out supply. 4= Supply as assembly. 5= Check other tables.

## 02 Labels and Decals-US(508046047002)

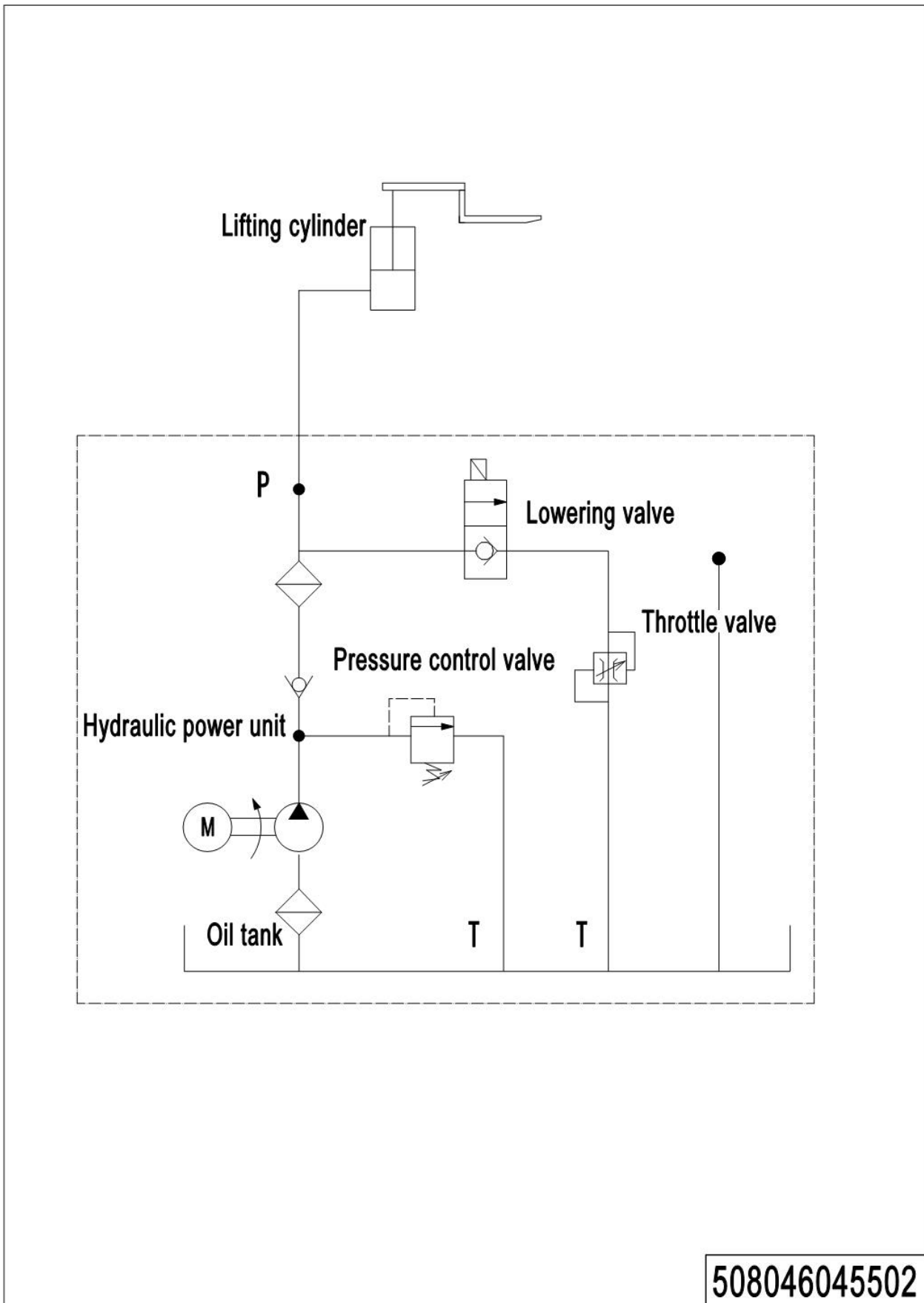
No.	Item Code	Mark	Item Description	Qty.	Substitute	Note
1	941200300002		Label	1		
2	508047020007		Label	1		
3	941200300003		Label	1		
4	508047020004		Label	2		
5	941200200035		Label	2		
6	941200100010		Label	1		
7	941200100009		Label	1		
8	508047020000		Label	1		
9	508098520025		Label	1		
10	508047020002		Label	1		
11	508047020009		Label	1		
12	508047520005		Label	1		
13	941200100011		Label	1		
14	941200300001		Label	2		
15	508047520002		Truck data plate	1		

Appendix

01 Electrical Circuit Diagram(508046045501)



1= Supply as package. 2= Supply with constraints. 3= Phasing-out supply. 4= Supply as assembly. 5= Check other tables.

**02 Hydraulic Circuit Diagram(508046045502)**

### 03 Consumable Parts List

No.	Item Code	Item Description	Qty.	Chapter/ Section/ Number
1	910700200058	Bearing	1	Chapter 1/01/5
2	910700600044	Bearing	1	Chapter 1/01/7
3	910700200004	Bearing	1	Chapter 1/02/4
4	508098520000	Carbon Brush	4	Chapter 1/02/6. 01
5	910700200016	Bearing	1	Chapter 1/02/6. 03
6	508098520003	Wheel	1	Chapter 1/02/8
7	508098520026	Wheel	1	Chapter 1/02/8
8	508098520008	Brush	1	Chapter 2/01/4. 02
9	508098510018	Seal Kit	1	Chapter 2/01/10. 01
10	508598510004	Seal Kit	1	Chapter 2/01/10. 03
11	940500100097	Bushing	2	Chapter 3/01/16. 01 Chapter 3/02/17. 01
12	911200100002	Oil Cup	2	Chapter 3/01/16. 02 Chapter 3/02/17. 02
13	940500100083	Bushing	8	Chapter 3/01/16. 05 Chapter 3/02/17. 05
14	911200100001	Oil Cup	2	Chapter 3/01/19. 06 Chapter 3/02/20. 06
15	508033010001	Wire Harness	1	Chapter 4/01/4
16	940500200001	Bushing	2	Chapter 4/01/6
17	920200400027	Proximity Switch	1	Chapter 4/01/9
18	508011010001	Gas Spring	1	Chapter 4/01/10. 3
19	505638520039	Running Pulley	2	Chapter 4/03/1. 02
20	508098510049	Wheel	2	Chapter 4/03/2
21	940500200038	Bushing	4	Chapter 4/03/2. 01
22	940500200005	Bushing	4	Chapter 4/03/2. 01
23	910700200019	Bearing	8/4	Chapter 4/03/2. 04
24	910700200018	Bearing	4	Chapter 4/03/2. 04
25	940300300005	Wheel $\Phi$ 80x70	4	Chapter 4/03/2. 05
26	940300300031	Wheel $\Phi$ 60x70	4	Chapter 4/03/2. 05
27	940500100088	Bushing	4	Chapter 4/03/2. 09
28	508098510050	Wheel	2	Chapter 4/03/3
29	940300300023	Wheel $\Phi$ 80x93	2	Chapter 4/03/3. 01
30	910700200018	Bearing	2	Chapter 4/04/6. 1

No.	Item Code	Item Description	Qty.	Chapter/ Section/ Number
31	940300300017	Wheel $\Phi$ 80x30	1	Chapter 4/04/6. 2
32	508098510047	Spring Components	2	Chapter 4/04/7
33	508033010010	Wire Harness	1	Chapter 5/01/1
34	508033010003	Wire Harness	1	Chapter 5/01/2
35	508033010001	Wire Harness	1	Chapter 5/01/3
36	508033010005	Wire Harness	1	Chapter 5/01/4
37	508033010004	Wire Harness	1	Chapter 5/01/5
38	508033010006	Wire Harness	1	Chapter 5/01/6
39	508033010018	Wire Harness	1	Chapter 5/01/6
40	508033010007	Wire Harness	1	Chapter 5/01/7
41	508033010000	Wire Harness	1	Chapter 5/01/8
42	508033010009	Wire Harness	1	Chapter 5/01/8
43	920200100015	Emergency Button	1	Chapter 5/02/1
44	920200300012	Microswitch	1	Chapter 5/02/7
45	920100200006	Fuse	1	Chapter 5/04/1. 05